

ASOR 2017 Annual Meeting – Boston, MA

The Evolution of the Assyrian Landscape in the Kurdistan Region of Iraq



Jason Ur—Professor of Anthropology,
Harvard University

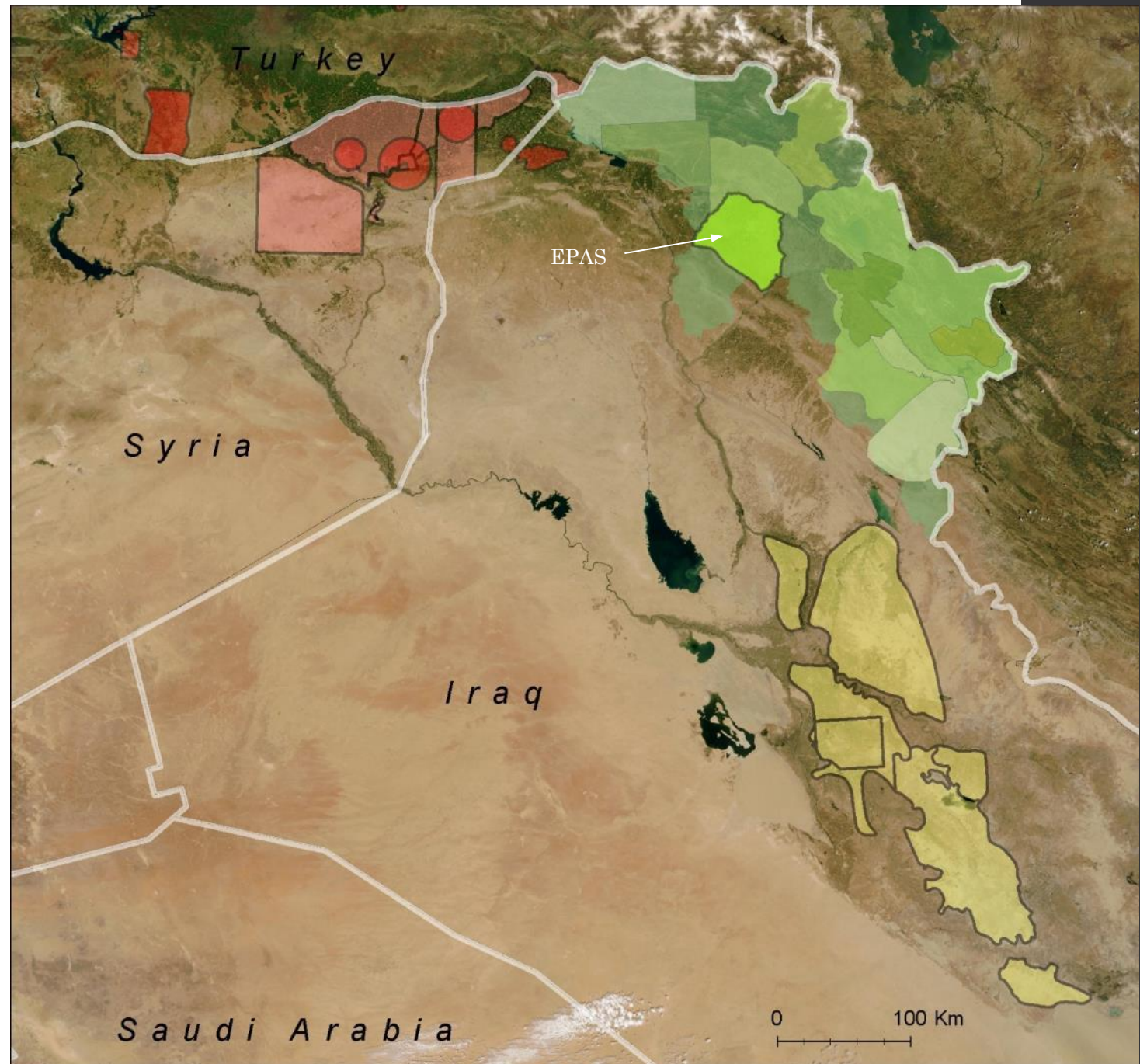


Nader Babakr—Director of Antiquities,
Erbil

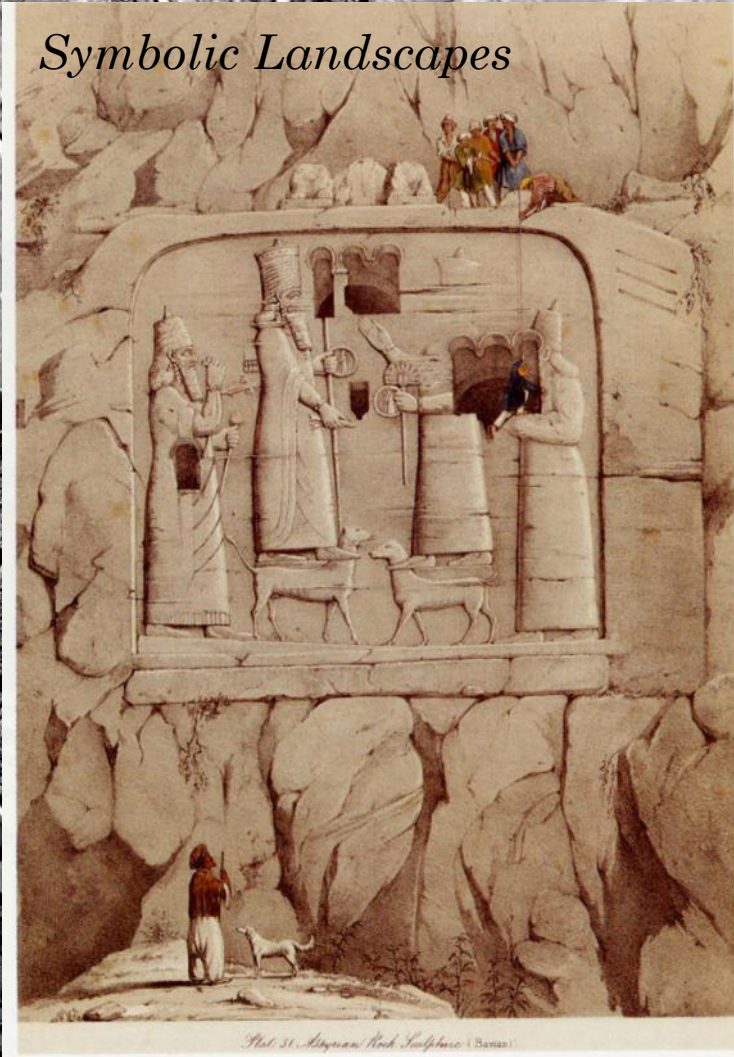


The Erbil Plain Archaeological Survey

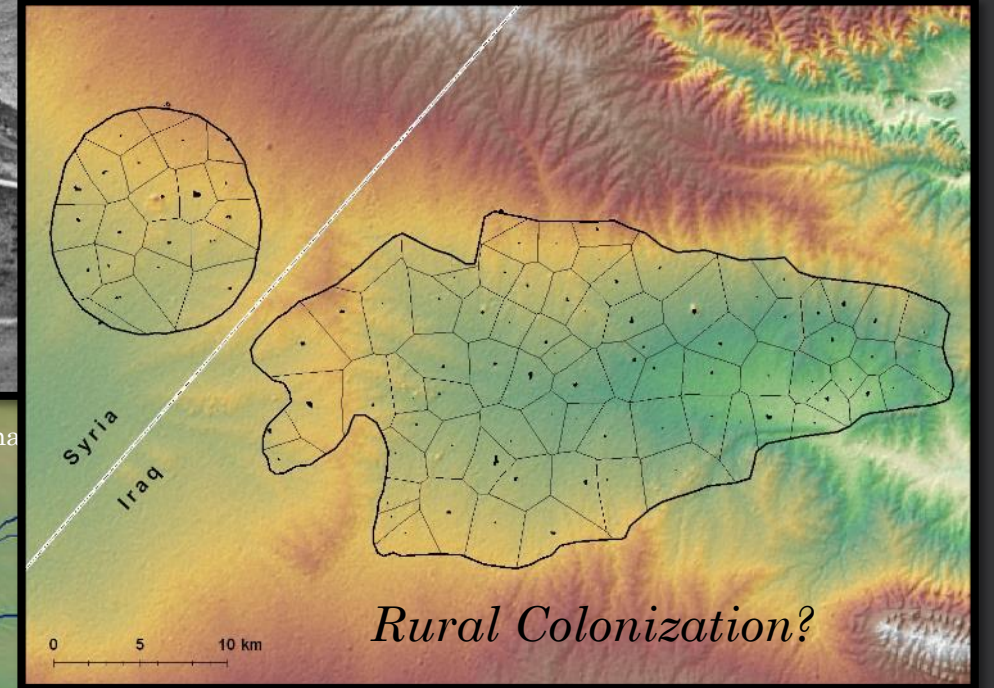
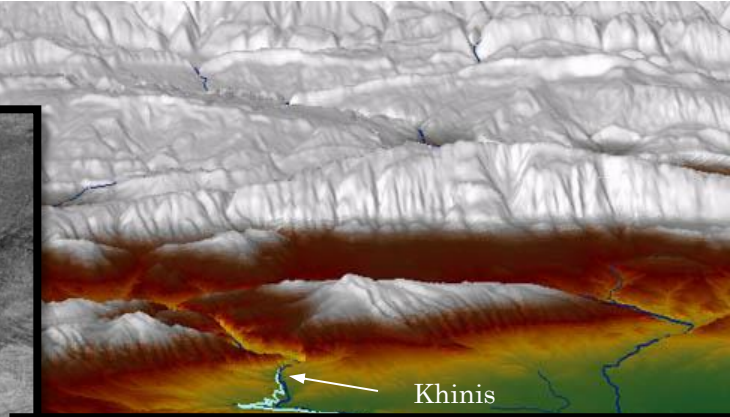
Research Goals 2012-2017



The Imposed Landscape of Assyria?



al-Sha
Dam
neveh



Field & Lab Methods



Remote Sensing Sources

Qasr Shemamok, 50 ha Assyrian City



U2 (1960)



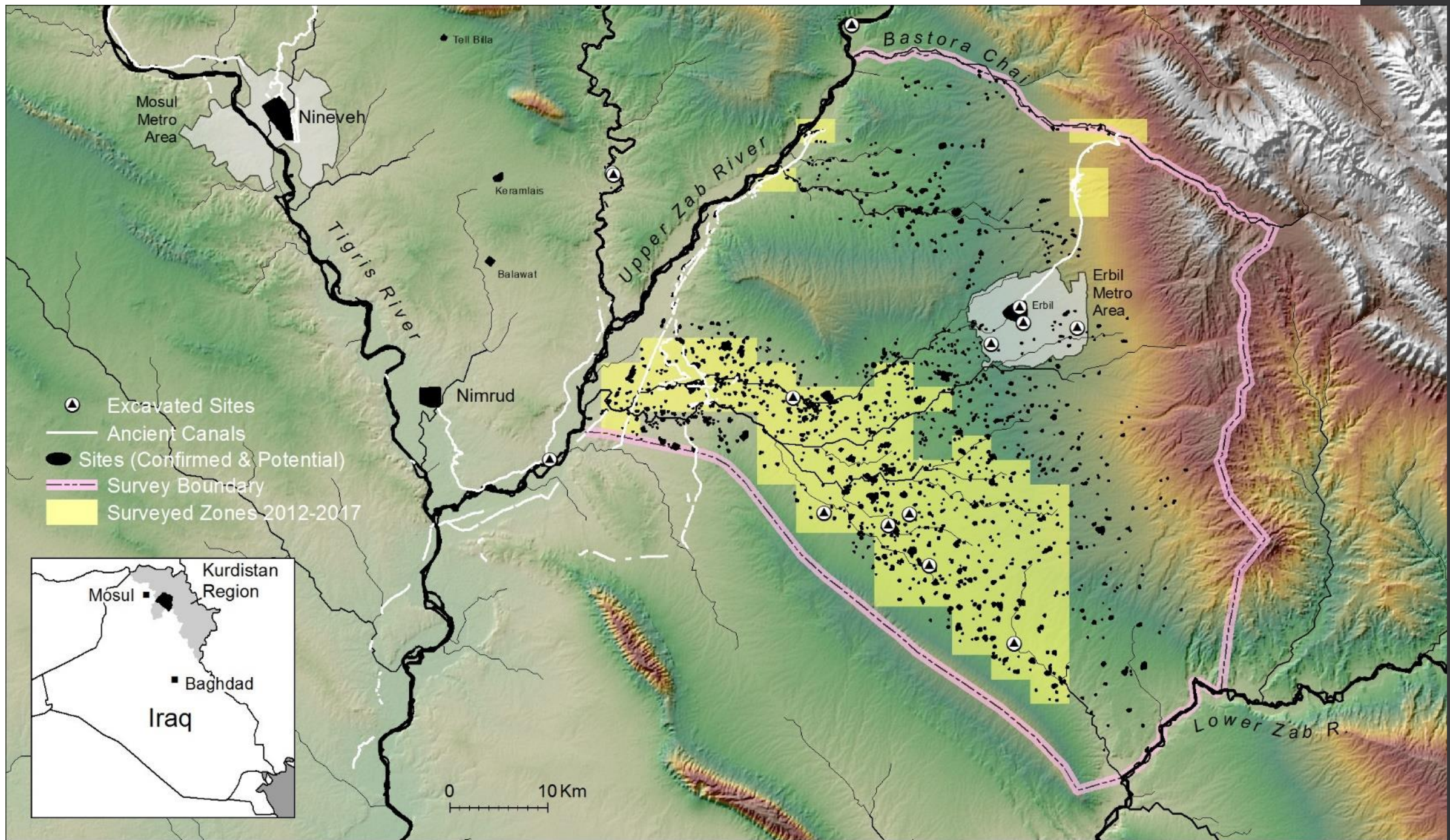
CORONA KH4A (1967)



HEXAGON KH9 (1972)



GeoEye-1 (2013)

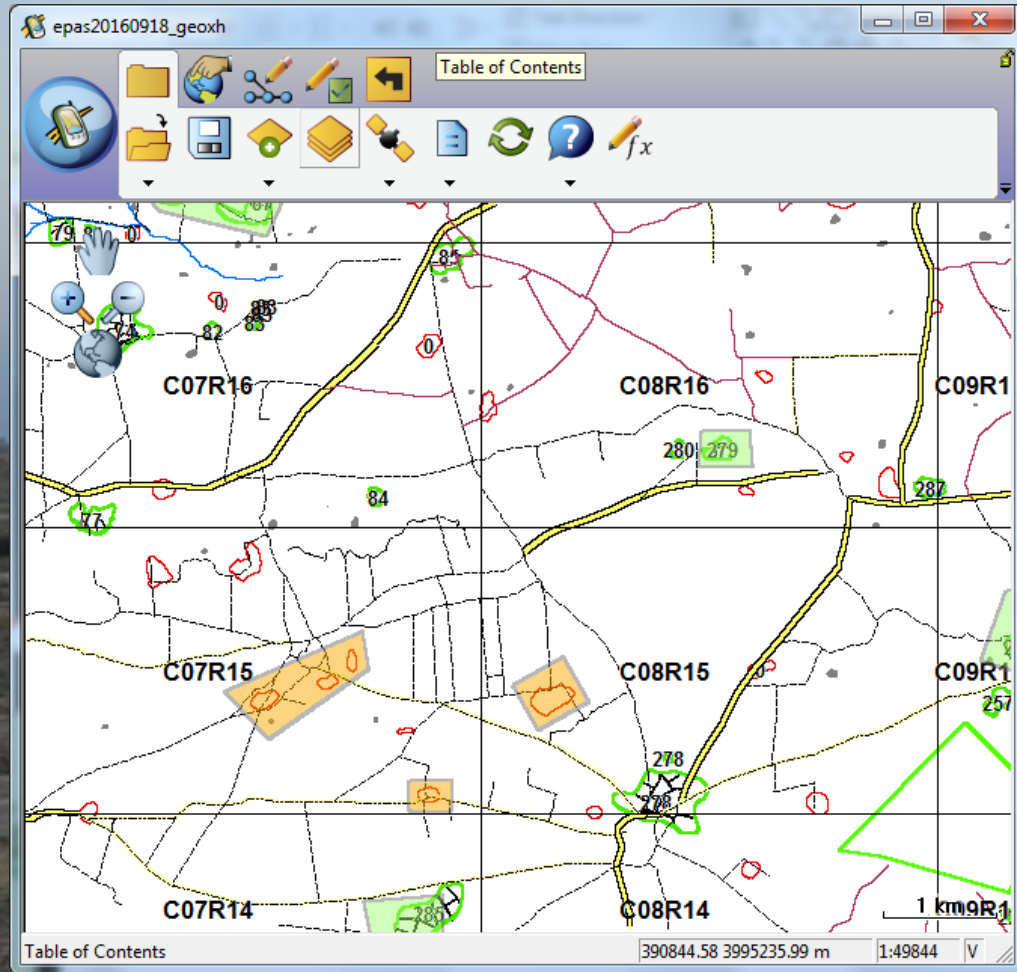




The “Drone Revolution” in Archaeology

Erbil Plain Archaeological Survey, Kurdistan Region of Iraq

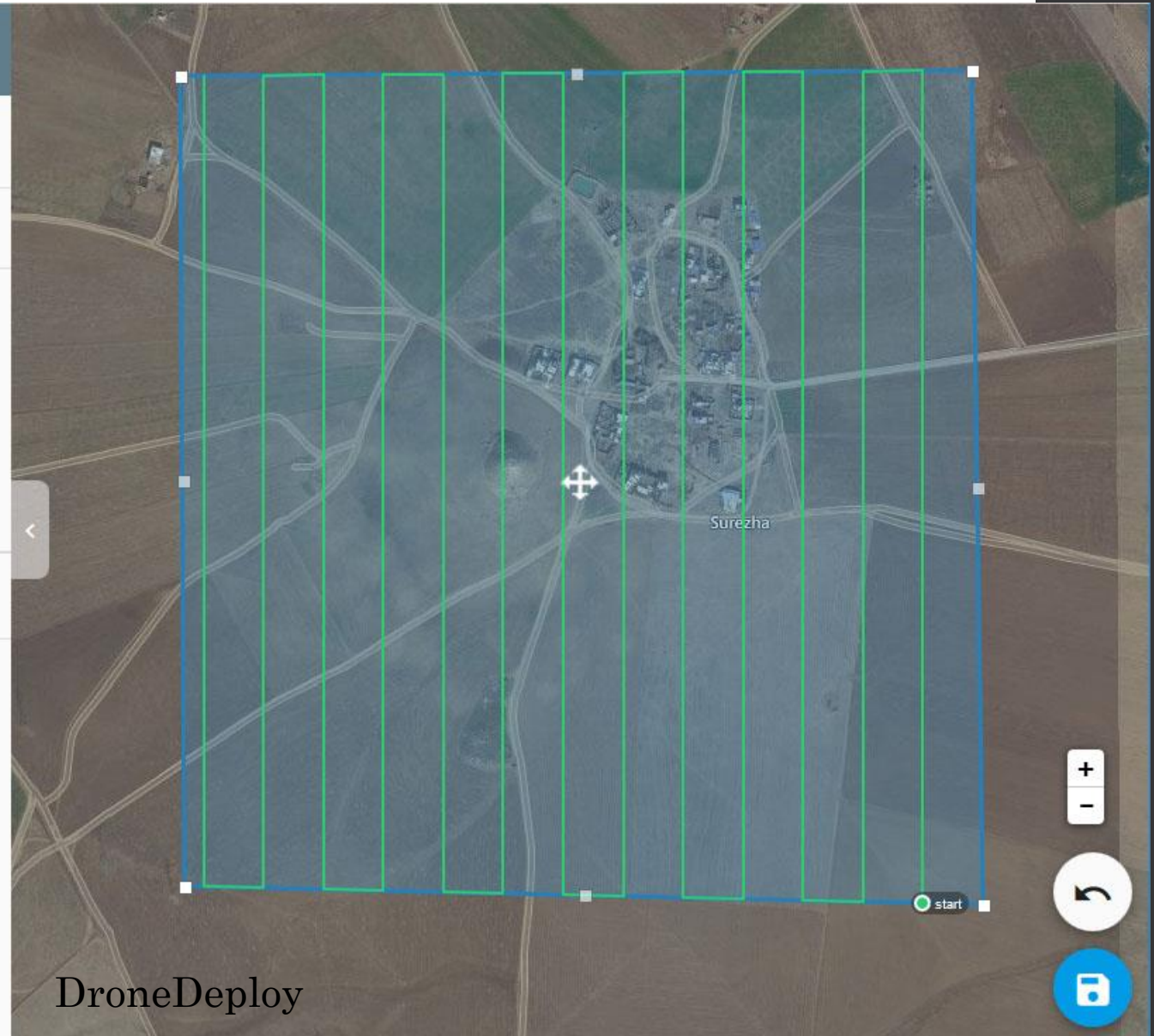
Field Survey 2012-2017



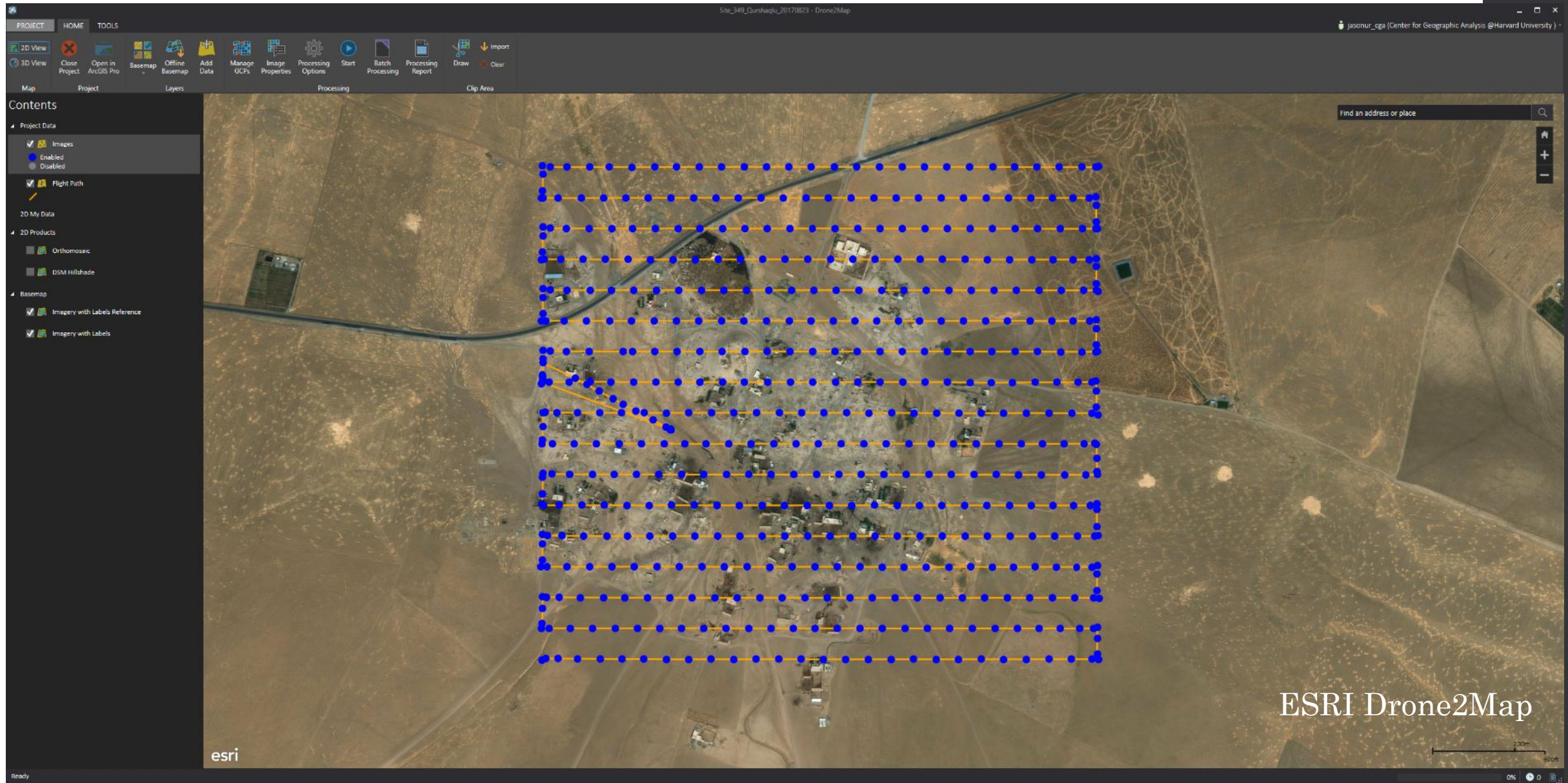
ESRI ArcPad + Trimble Geo7X

Day 1: Drone Team Planning & Flight

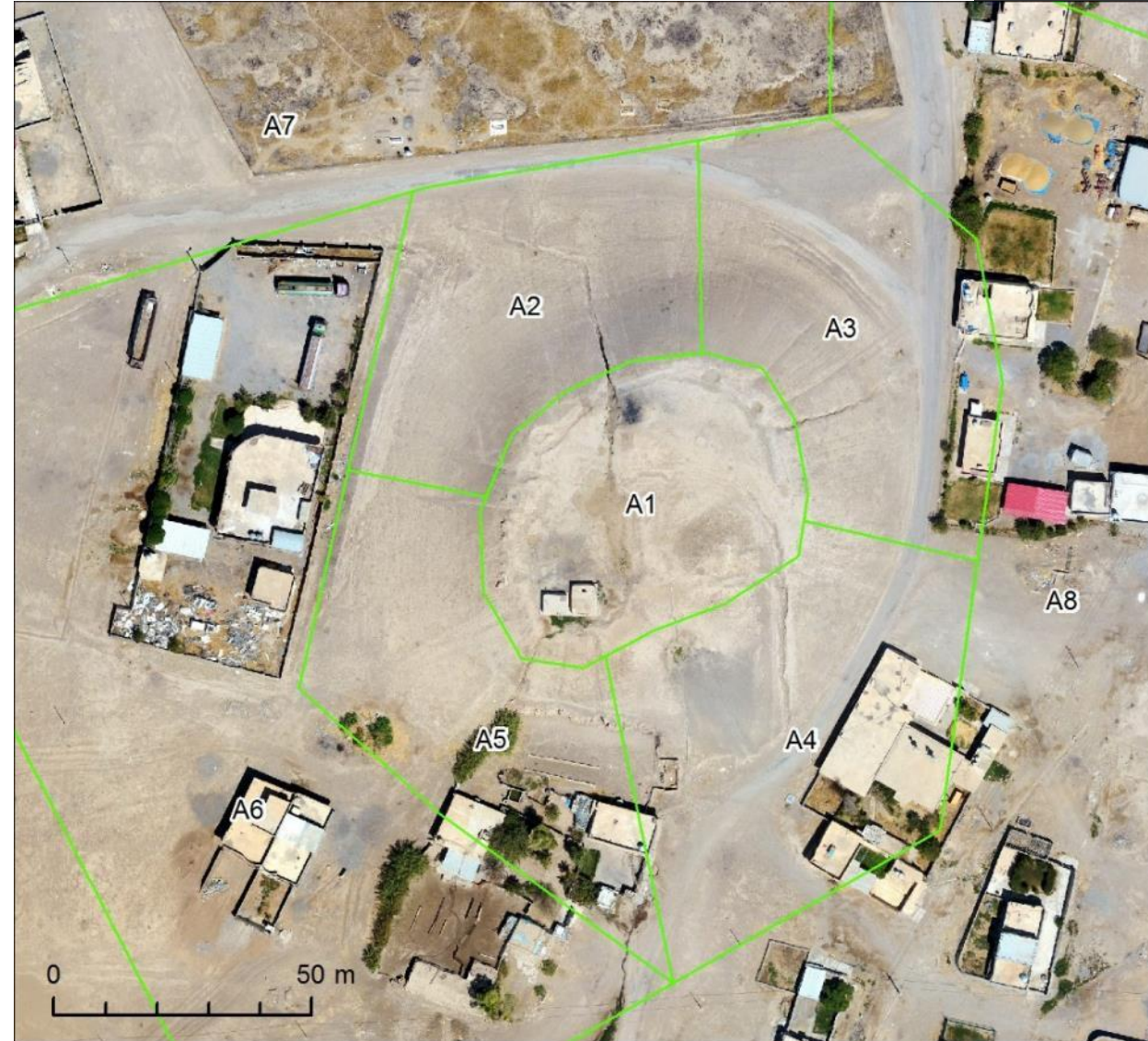
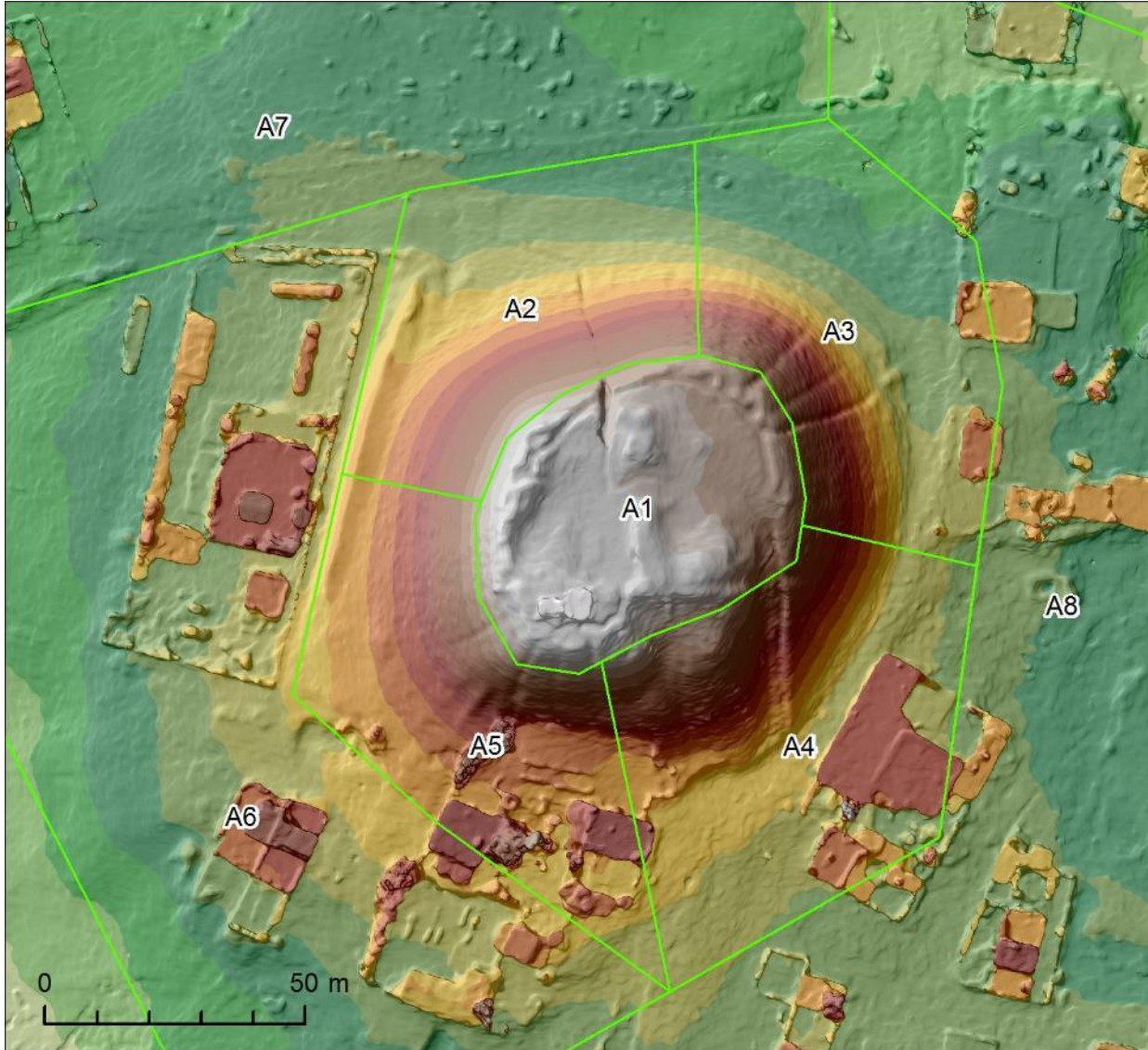
DJI Phantom 4
Pilot Khalil Barzinji



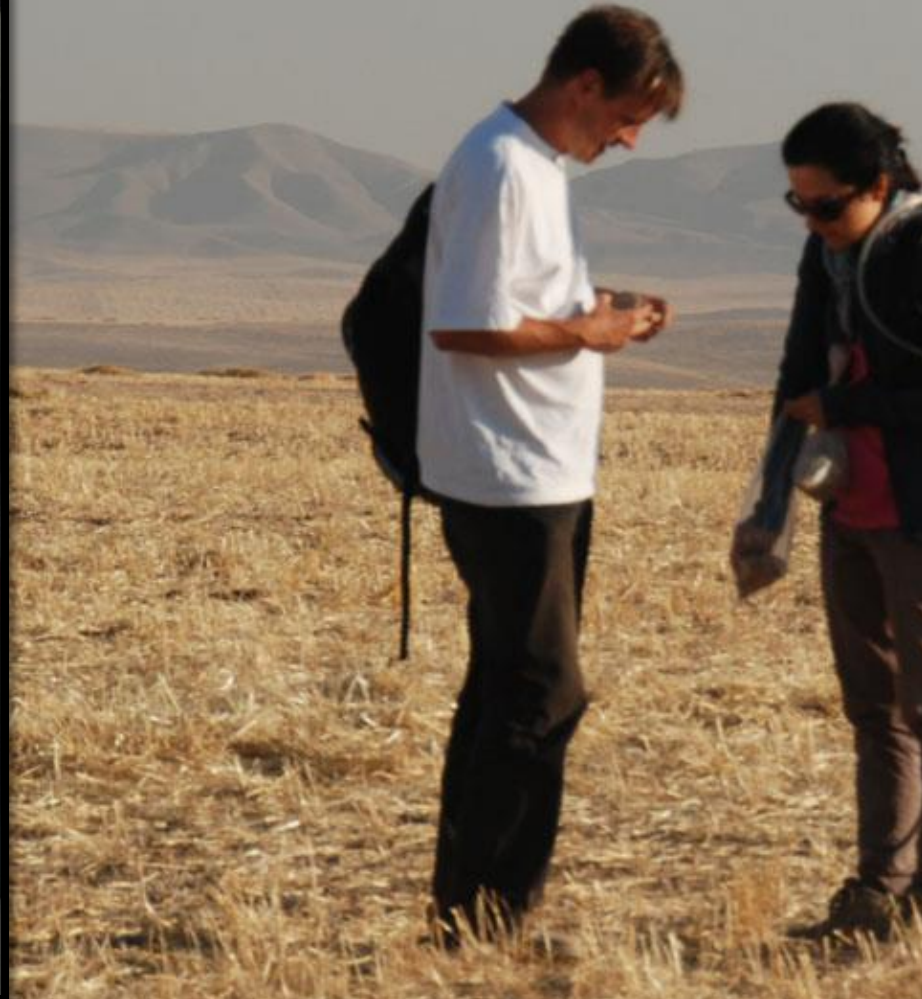
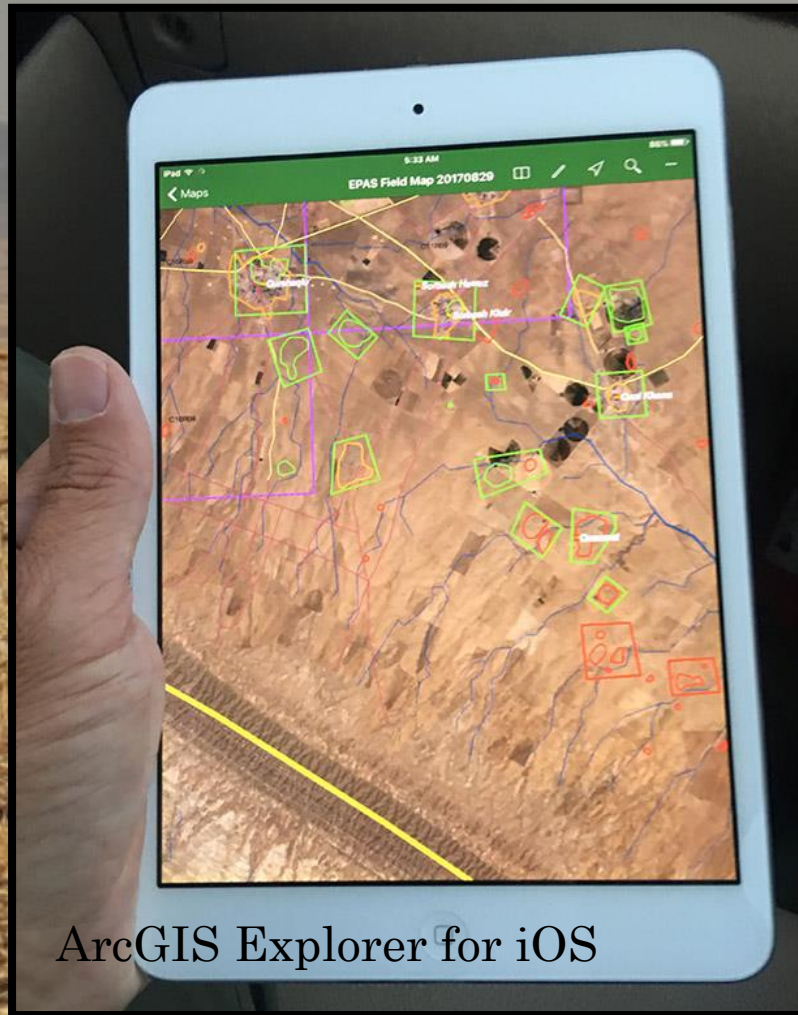
Day 1 evening: Lab-based processing



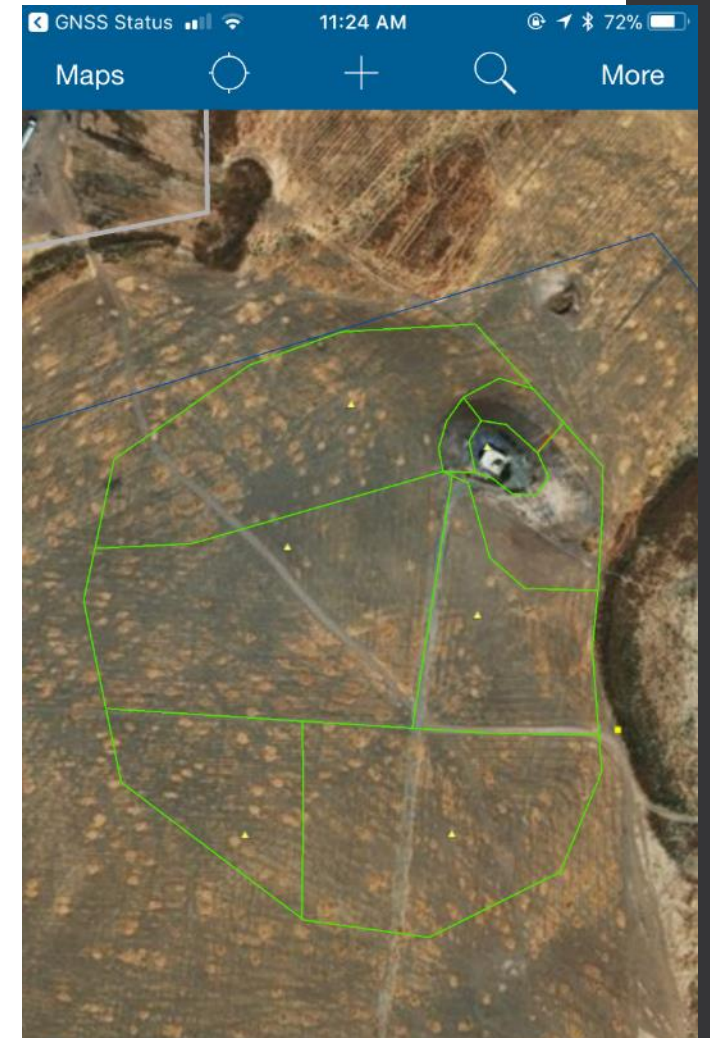
Day 2: Lab Ortho/DEM Generation & Planning



Day 3: Field Team revisit and artifact collection



Mobile GIS using ArcGIS Online



Visualization and Analysis

Photogrammetry-
derived model of Qasr
Shemamok, an
Assyrian city
(ca. 1500-600 BC)

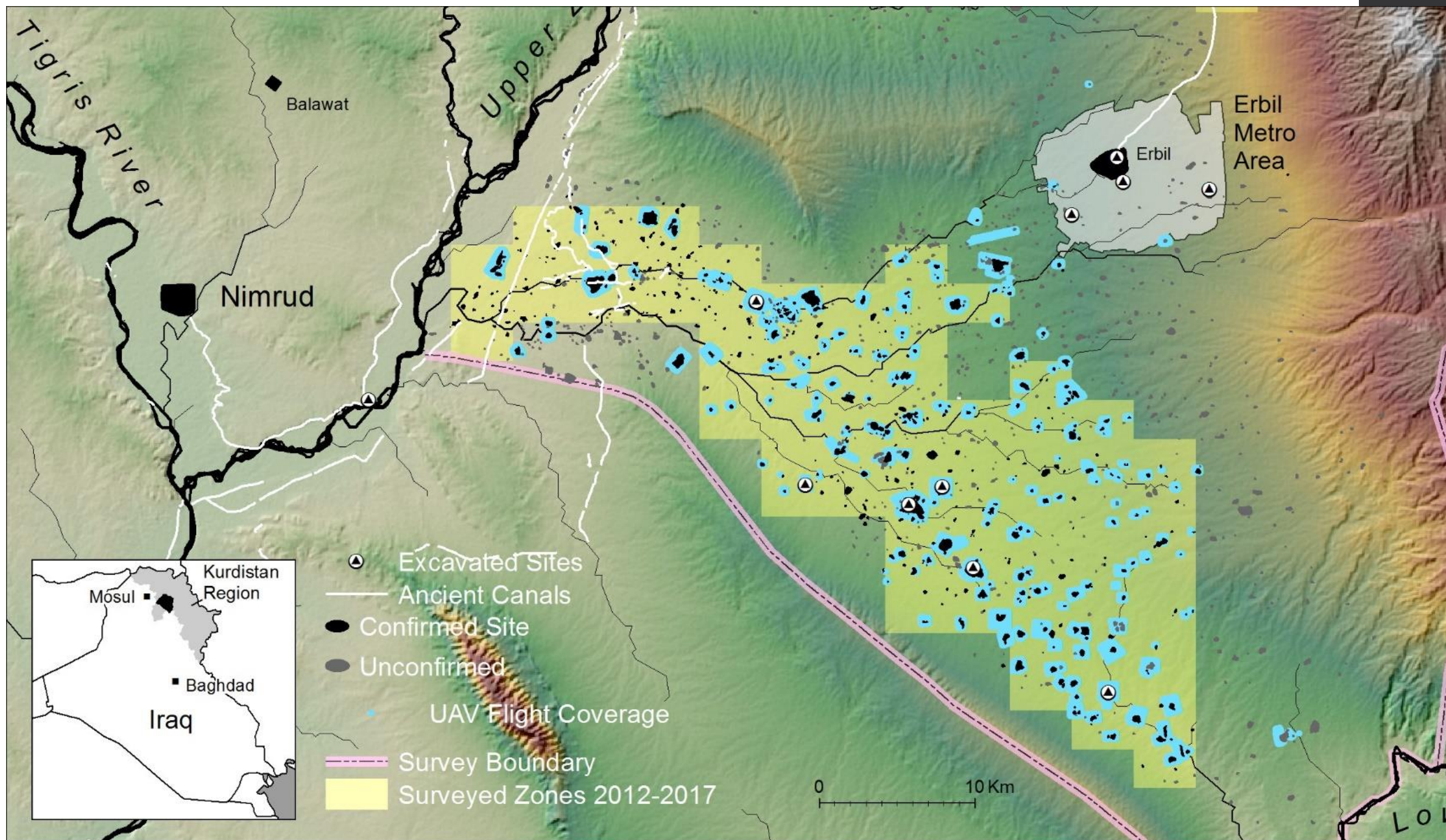
<https://sketchfab.com/epas>



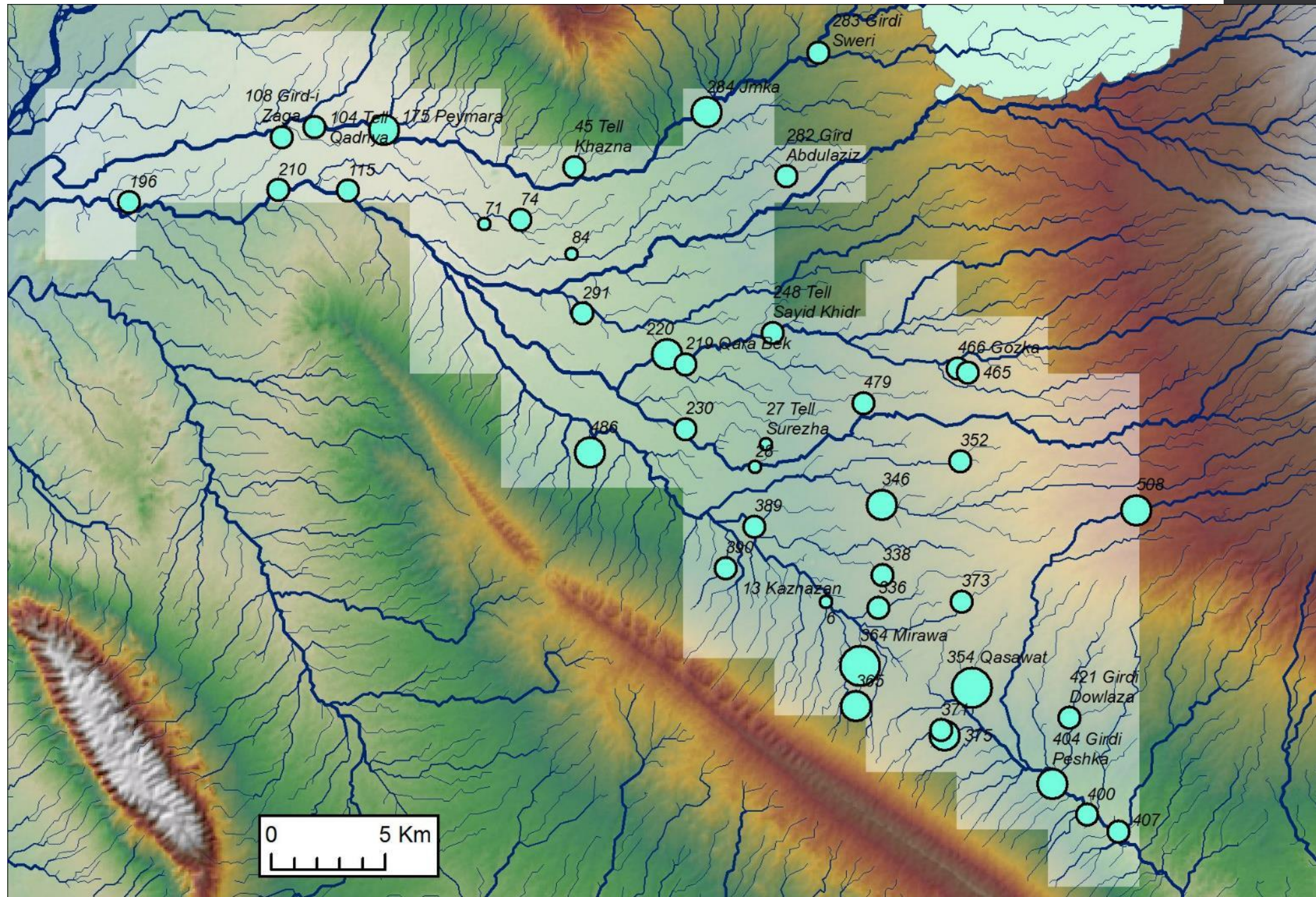
The Neo-Assyrian Landscape

EPAS Field Results 2016-2017

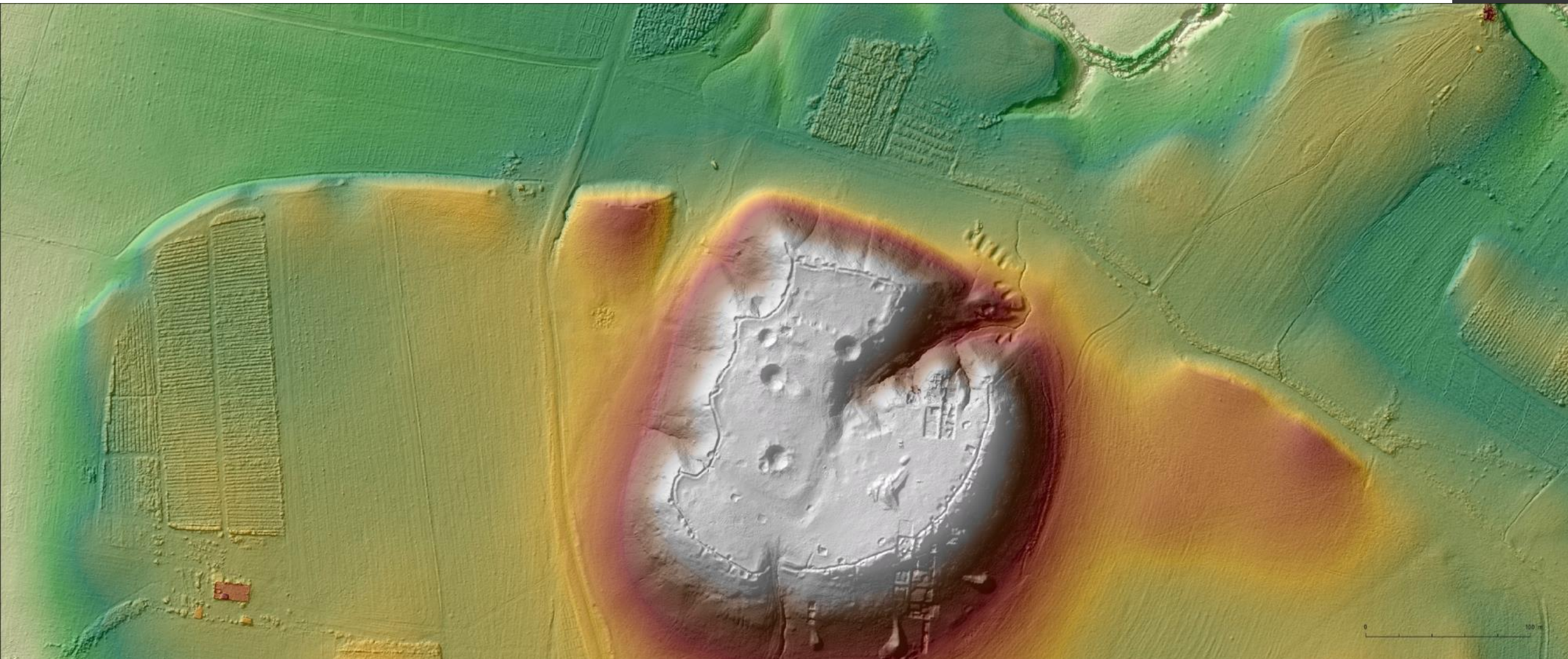




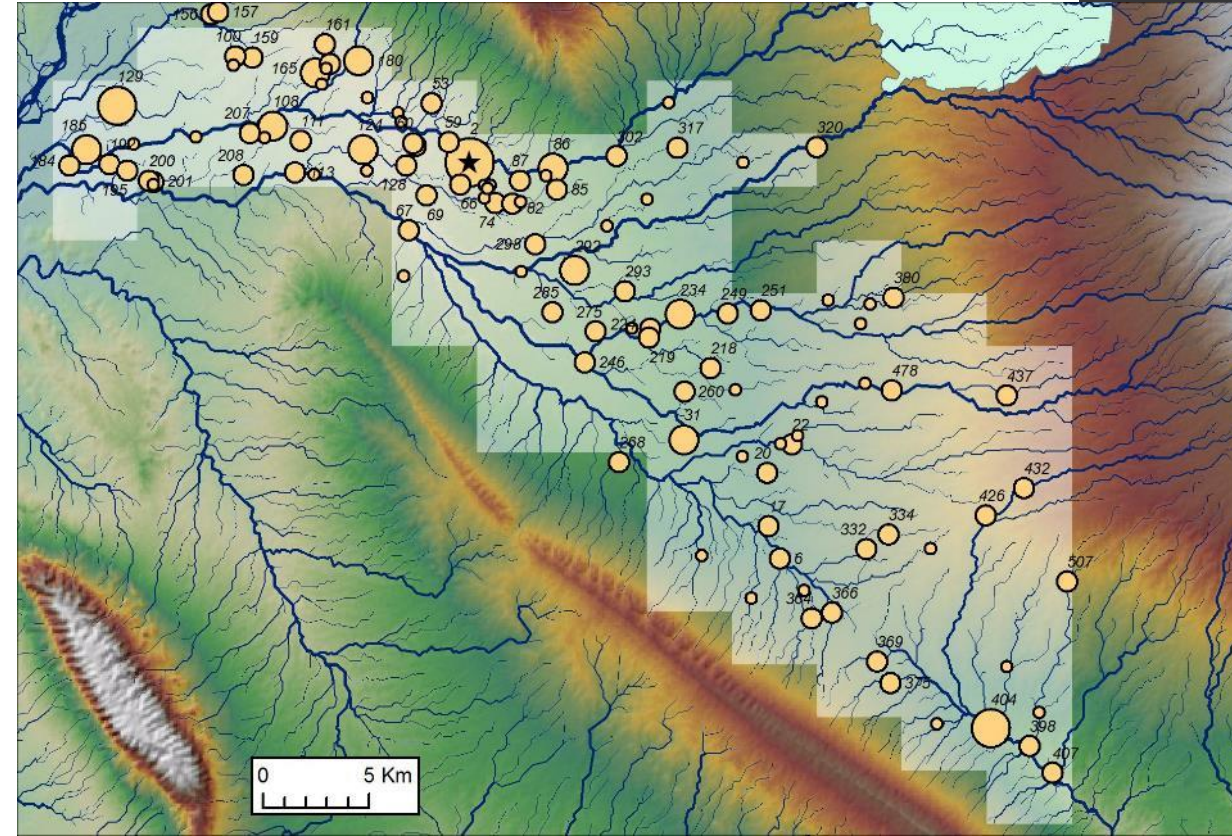
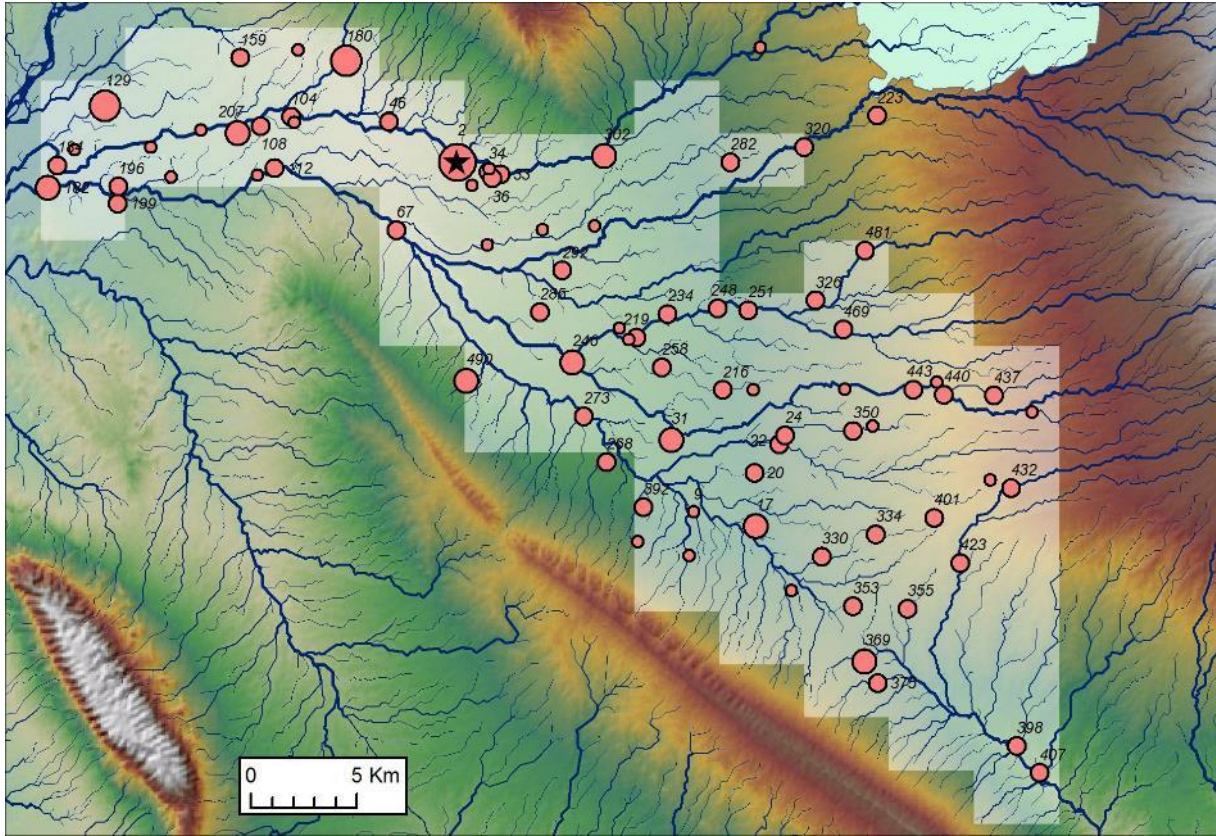
The Uruk Presence in Erbil



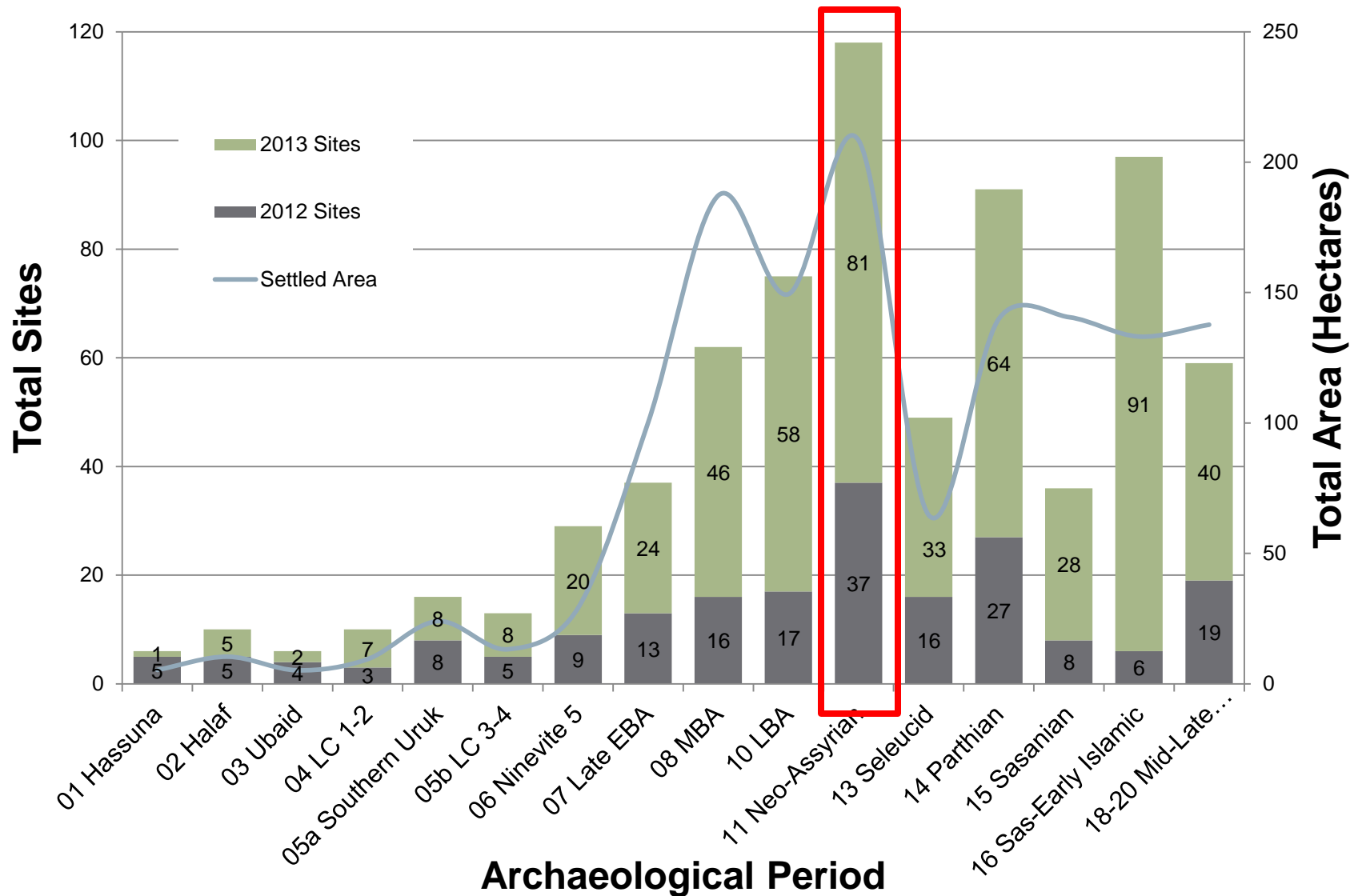
Assyrian Urbanism: Site 2 Qasr Shemamok (Kilizu)



EPAS Settlement: LBA to Neo-Assyrian



Settlement History of the Erbil Plain

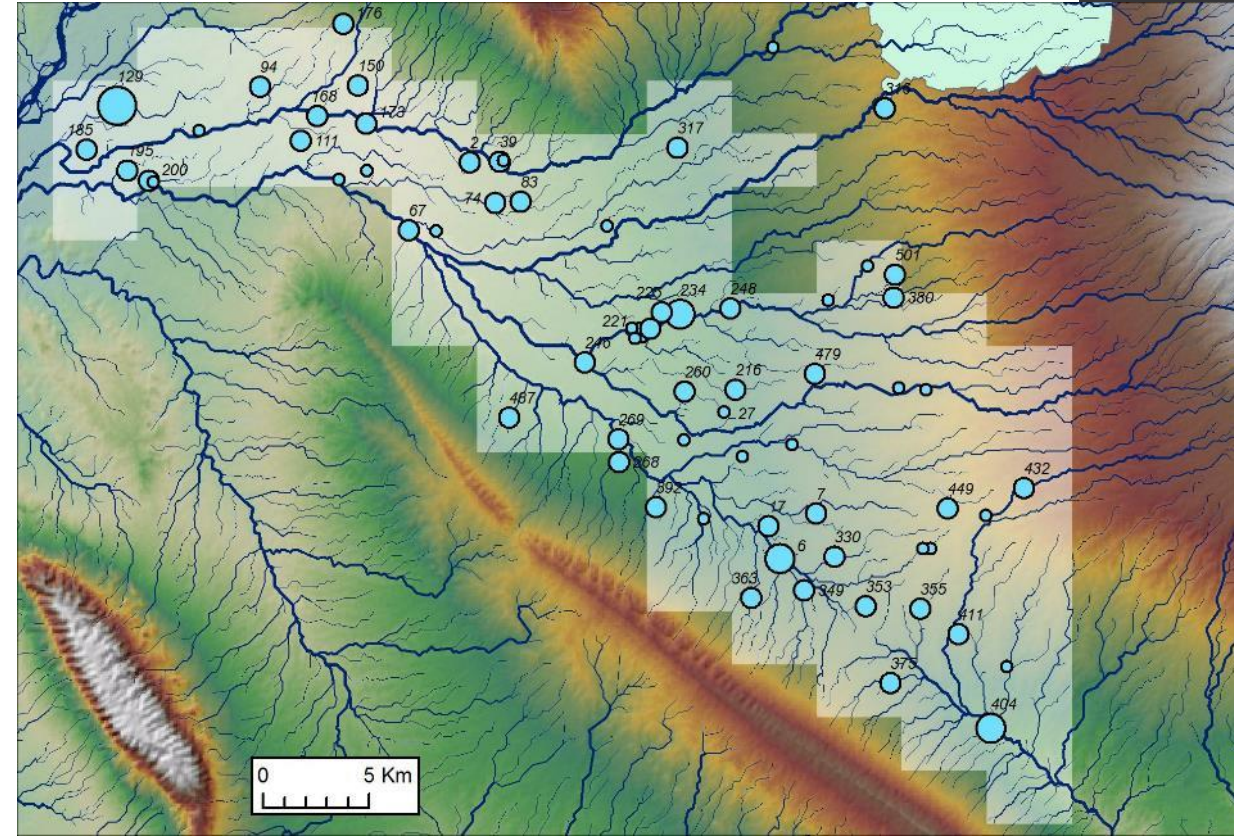
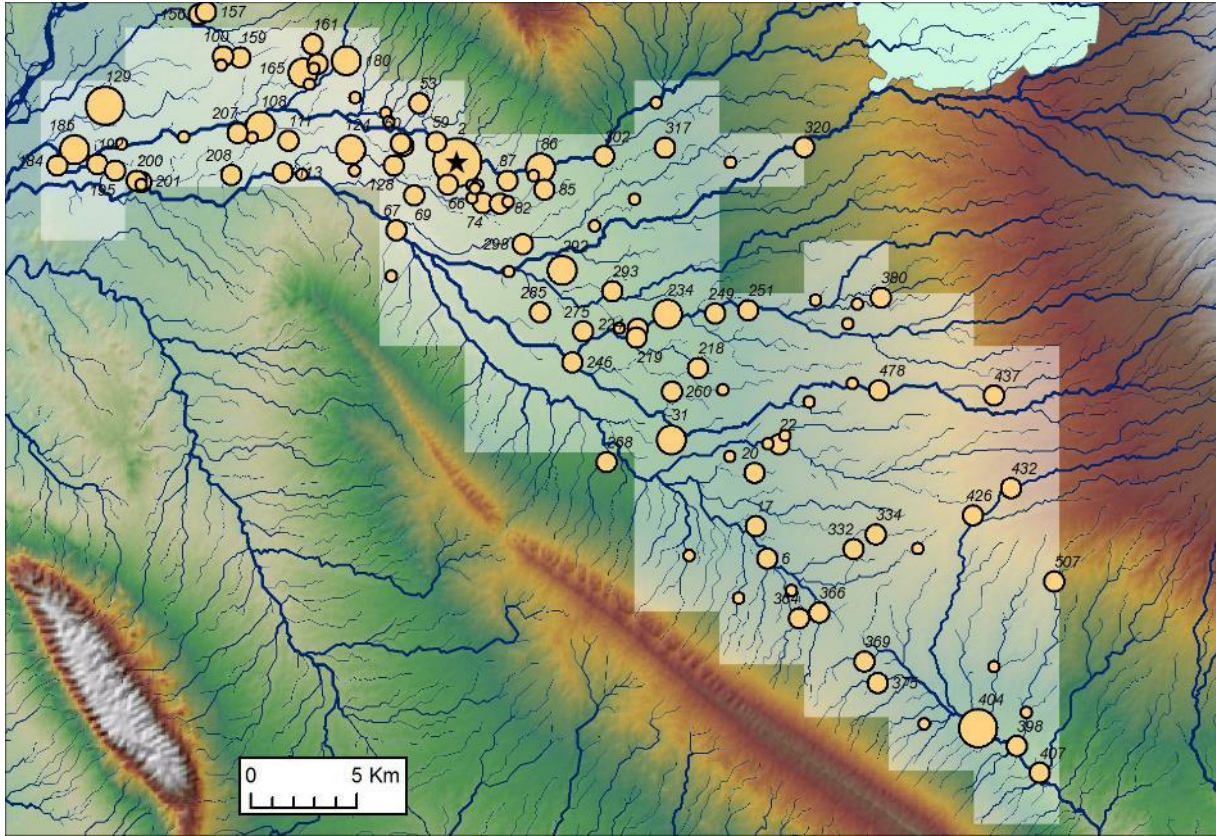


Neo-Assyrian population density

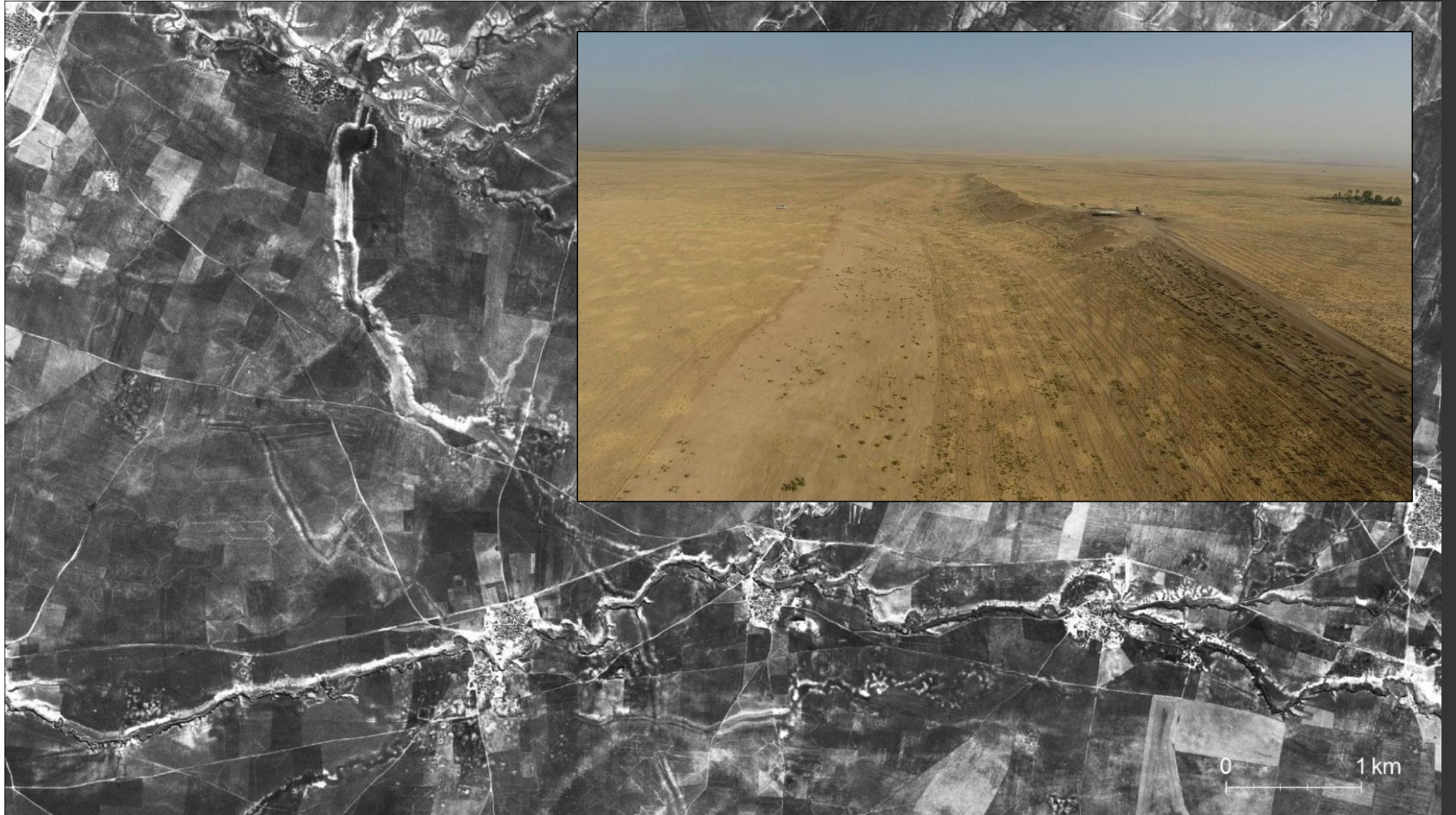
	Iron Age/Neo-Assyrian			
Survey	Sites	Sites/km ²	Area (ha)	Average Size (ha)
North Jazira Project	78	0.16	123.00	1.58
Tell Beydar Survey	35	0.11	97.00	2.77
Tell Hamoukar Survey	22	0.18	70.59	3.21
Erbil Plain, SW zone	87	0.22	243.76	2.23 ⁽²⁾

Based on Wilkinson et al. 2004 Table 14.2, Ur 2010 Table 6.10. (1) The total area of the Tell Beydar Survey excludes a 136 km² basalt plateau with thin soils that was largely unsurveyed. (2) The average size for Neo-Assyrian sites in the EPAS Lower Siwasor zone excludes 50-ha Qasr Shemamok.

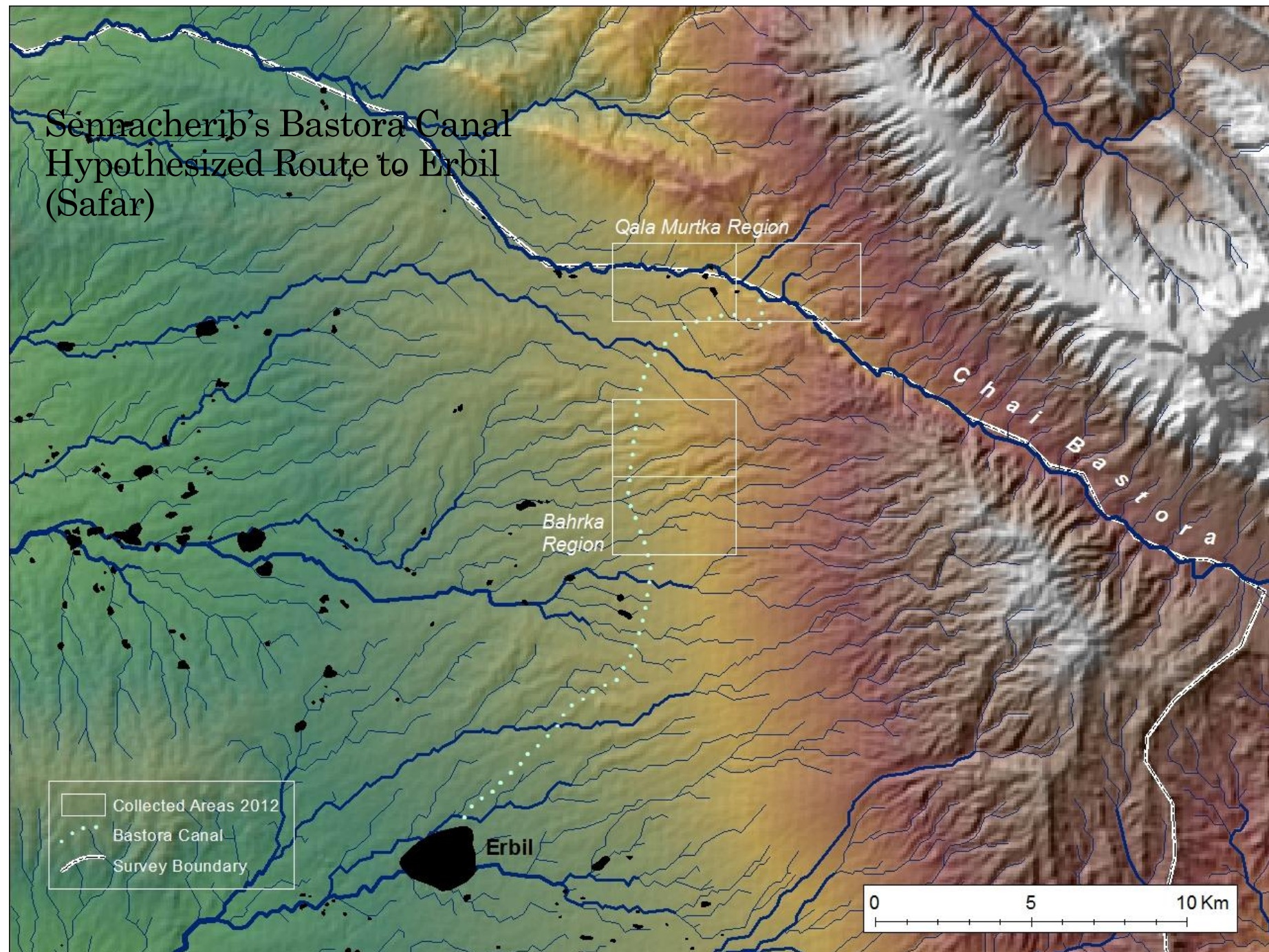
EPAS Settlement: Neo-Assyrian to Hellenistic



The Zaga Canal



Sennacherib's Bastora Canal Hypothesized Route to Erbil (Safar)



Sennacherib's Bastora dam and canal head



Erbil Directorate of Antiquities excavations at the Bastora Dam, January 2017



Nader Babakir, Director of Antiquities, Erbil Governorate

Bapir
Rowanduzi

Lidewijde de
Jong

Jess
Giraud

Shilan
Ramadan

Petra
Creamer

Kate
Rose

Rocco
Palermo

Augusta
McMahon



EPAS 2017

EPAS 2017: Kurdistan-based team



Acknowledgements

Kurdistan Regional Government, Iraq

- *General Directorate of Antiquities*
- *Directorate of Antiquities, Erbil Governorate*
- *KRG Representation in Washington DC*
- *State Board of Antiquities and Heritage, Baghdad*

Harvard University

Faculty of Arts & Sciences

American School of Prehistoric Research

Funding provided by The National Science Foundation, the National Geographic Society, Dumbarton Oaks, Harvard University Faculty of Arts & Sciences, and the American School of Prehistoric Research, and the ASOR Committee on Mesopotamian Civilization.

