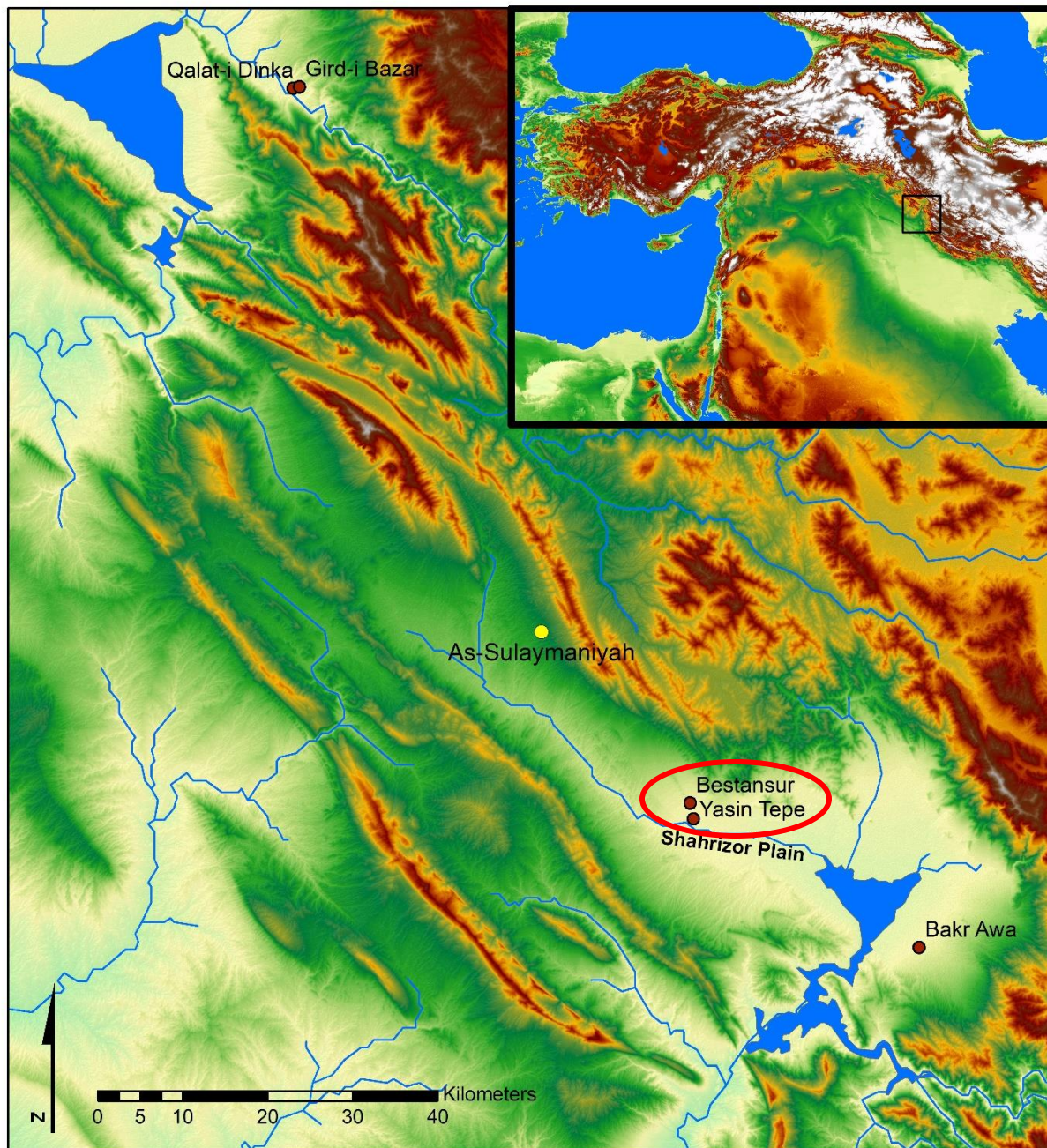


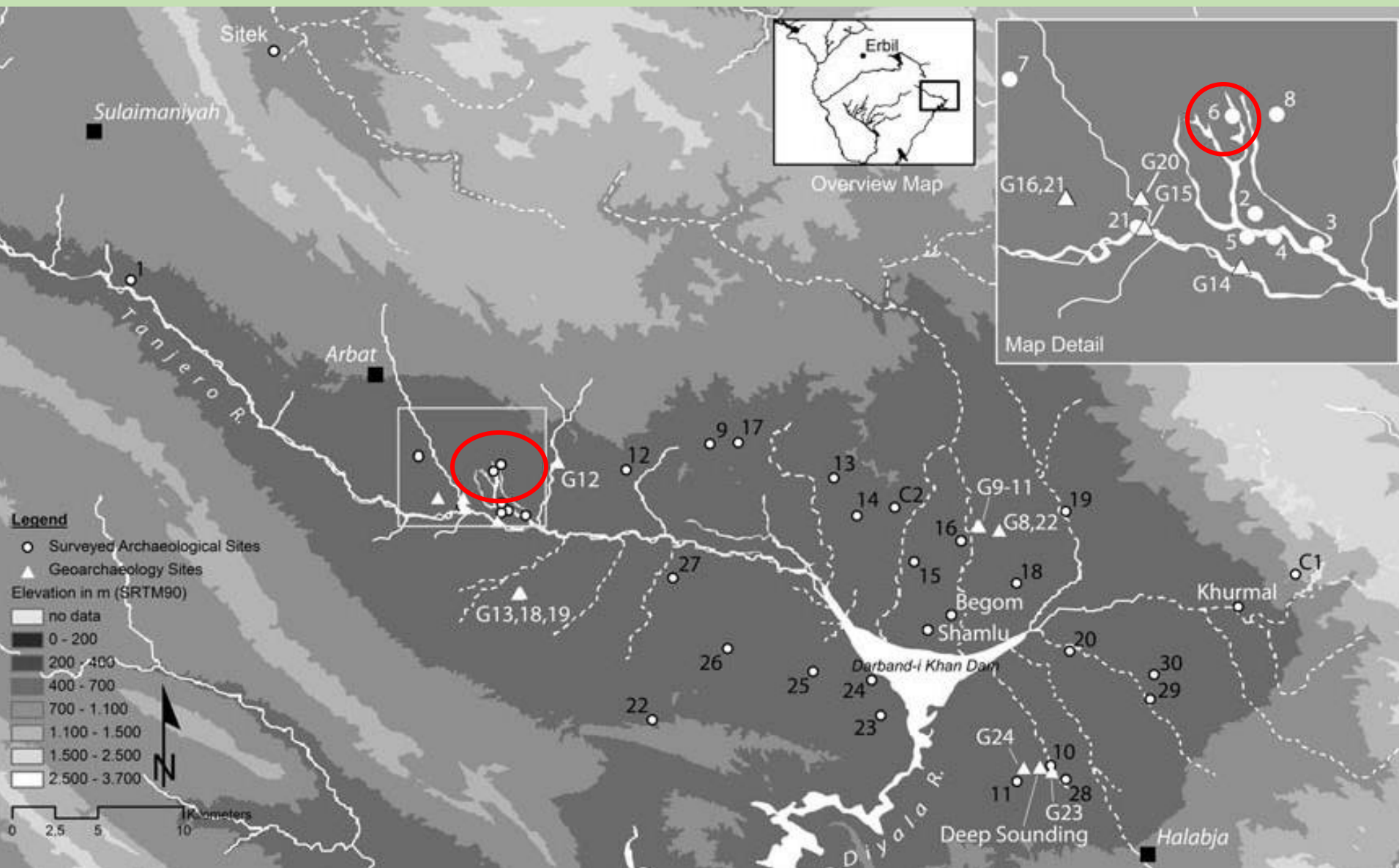
Archaeological Reflections of Identity in the Late Assyrian period Remains at Bestansur, Kurdistan

Lisa Cooper, University of British Columbia, Vancouver, Canada,
with the contributions of Sheri Pak,
UBC, and Lynn Welton, University of Toronto





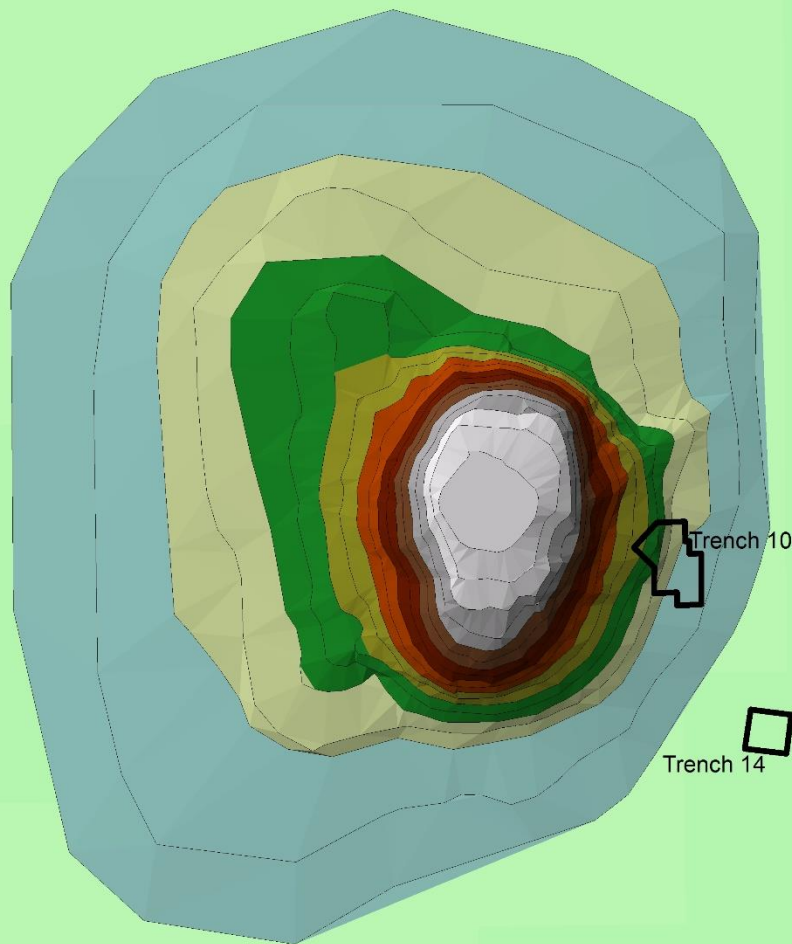
Map of the Sulaymaniyah province of Kurdistan, showing the location of Bestansur (map by L. Welton)



Shahrizor Plain (Sulaymaniyah Province)
with location of Bestansur (circled in red)

Mound of Bestansur, with directors Wendy and Roger Matthews, and excavations in the Neolithic 'House of the Dead', Trench 10.

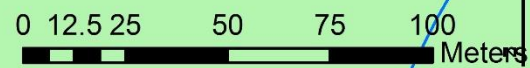




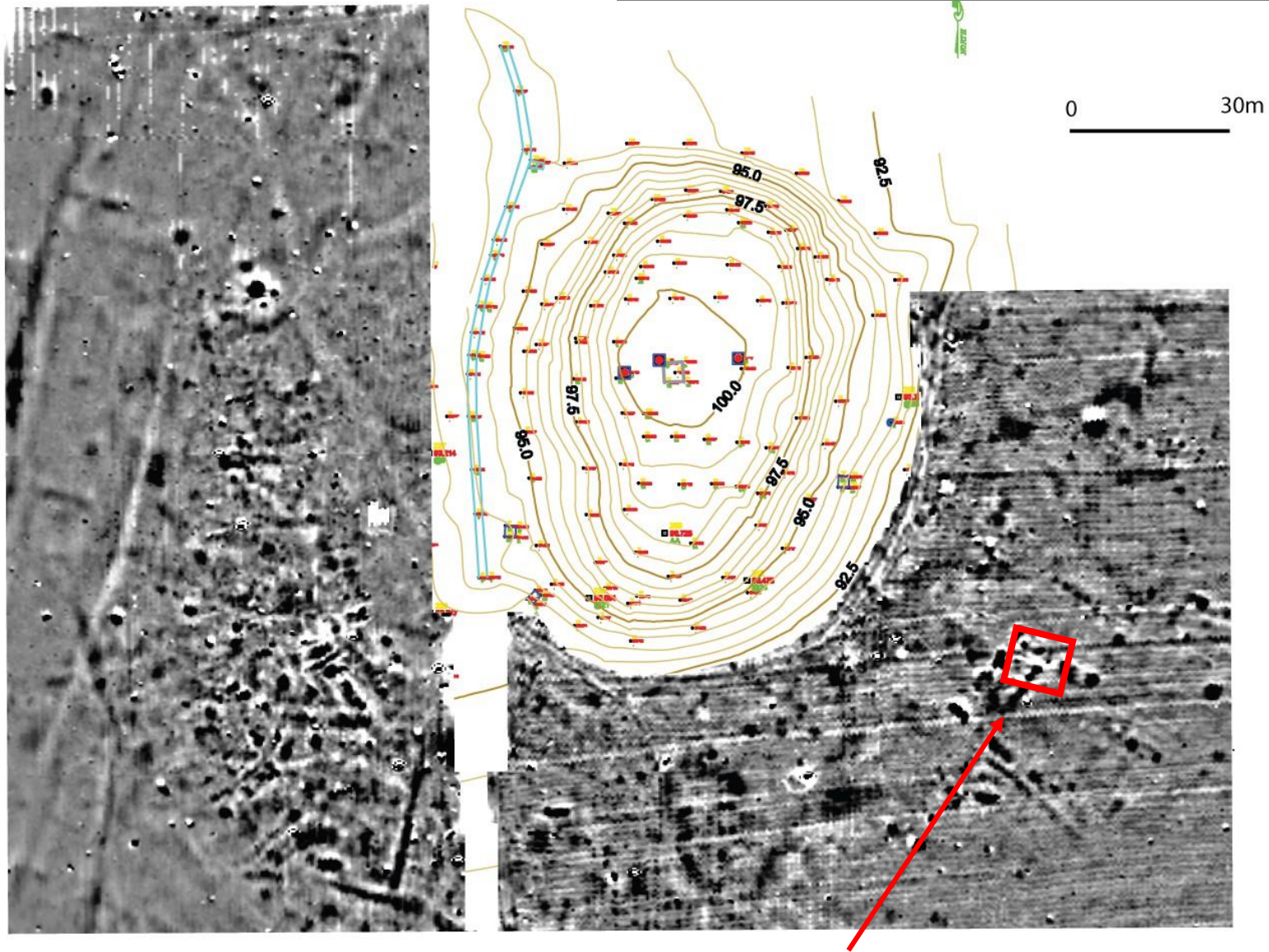
Trench 10

Trench 14

Mound of Bestansur, with locations of Trench 10 and 14
(Image by Lynn Welton)



Fluxgate Gradiometry Survey of
Betansur, David Thornley and William
Owen, August 2017.



Trench 14

Exploring Social-Cultural Identities at Bestansur:

Foodways-ascertaining food processing and food consumption behaviours through the collection and analyses of animal bones and paleobotanical samples, in combination with study of cooking facilities and pots.

Pottery Technology -Technological and microscopic analysis of ceramics, to reconstruct the ways in which specific groups manufactured their pottery and the local and exotic resources they used.

Built Environment – “Integrated Approach” which combines access analysis, considerations of non-verbal communication (i.e. information communicated through fixed and semi-fixed features such as walls, doors, hearths and storage jars, and portable artifacts such as furnishings and tools), and visibility analysis (which addresses what can be seen and experienced within a built space), to determine the kinds of movements, social interactions and daily activities carried out in the houses at Bestansur

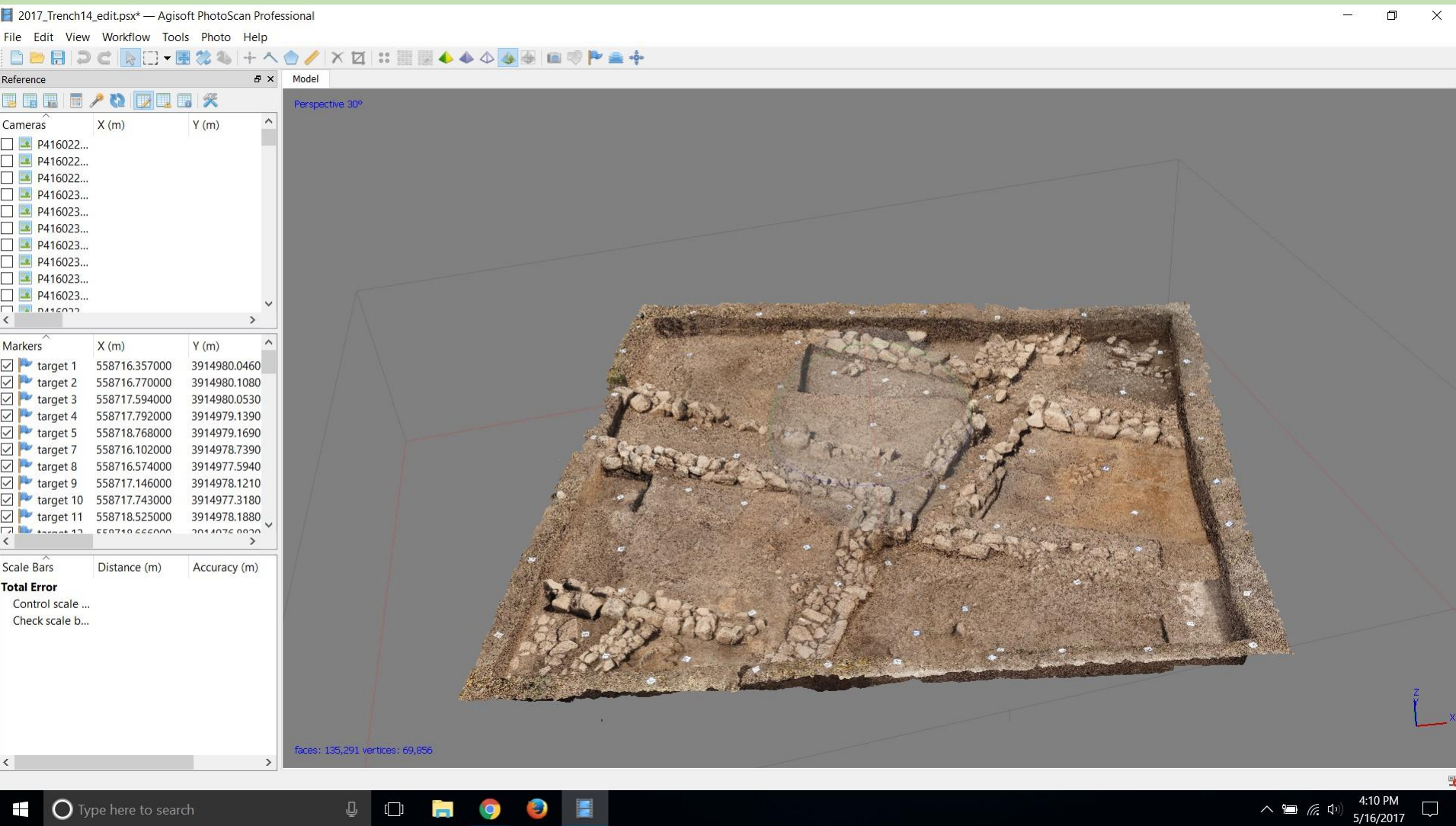
Photogrammetry in Trench 14



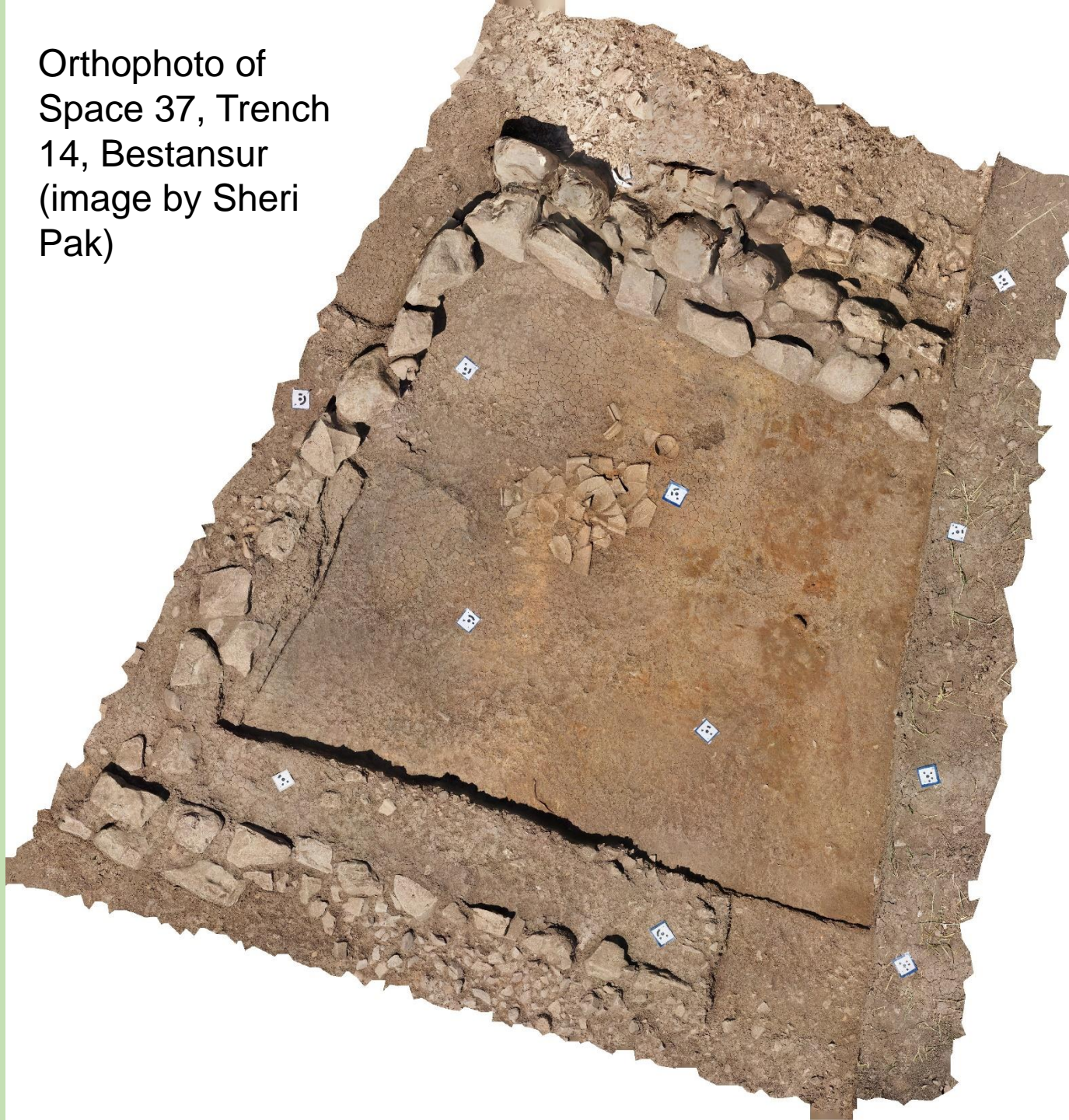
Photogrammetry in Trench 14



Screen capture of Agisoft Photoscan Professional user interface showing photogrammetric 3D model of Trench 14 (image by Sheri Pak).



Orthophoto of
Space 37, Trench
14, Bestansur
(image by Sheri
Pak)





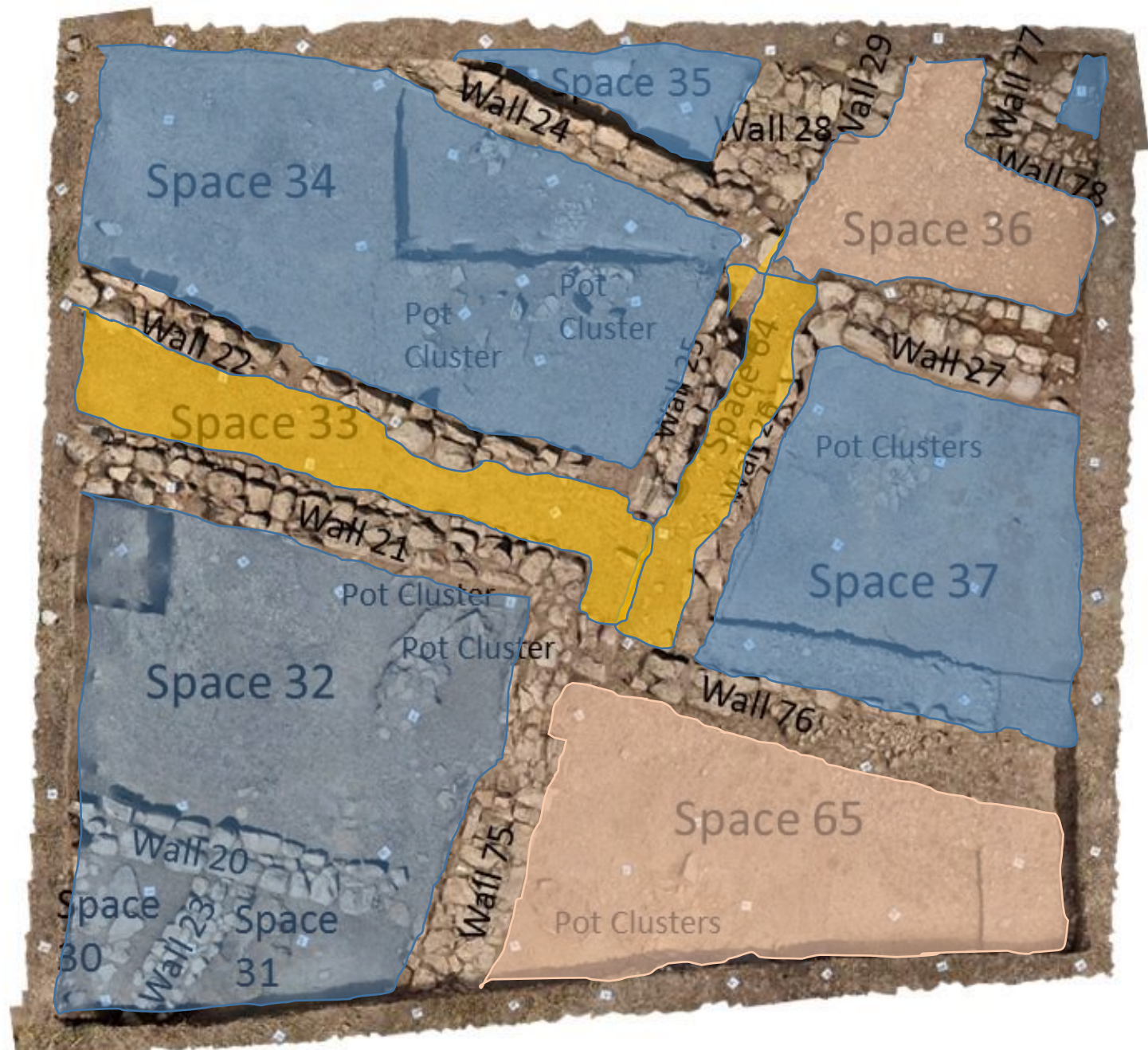
Orthophotograph of Trench 14
Bestansur (Image by Sheri Pak)

BESTANSUR 2017: Plan of Trench 14



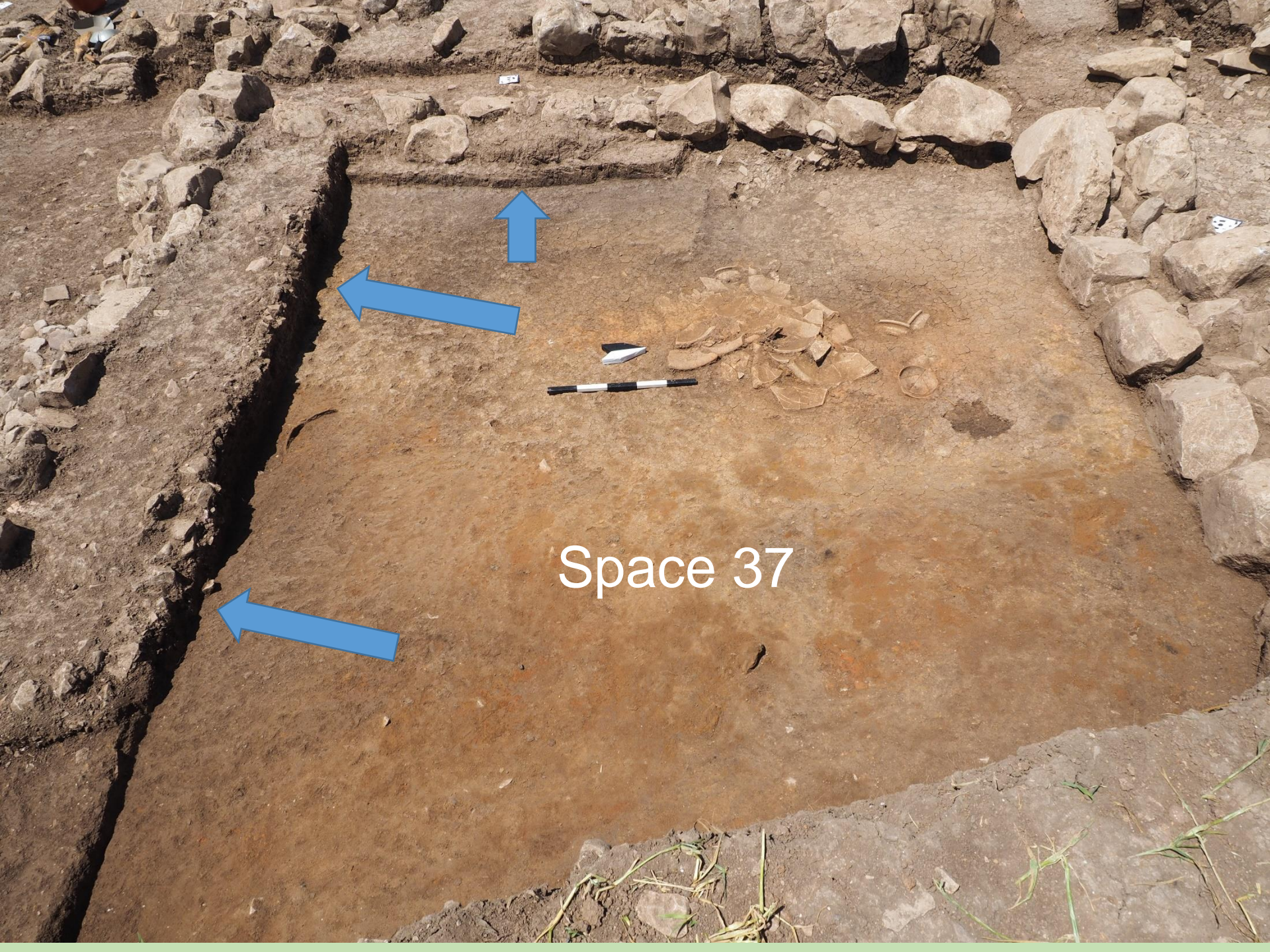
Image by Sheri Pak

1 meter



Space 32





Space 37



Space 36



In situ smashed
jars in Space 32
(2013)

The photograph captures an archaeological excavation site. In the center, a large, irregular pile of light-brown, fragmented pottery shards is visible. These fragments are of various sizes, some showing distinct rim profiles. The surrounding ground is a mix of dry, cracked earth and smaller, scattered pottery pieces. In the upper right corner, two brooms with natural bristles and wooden handles are lying on the ground. A black and white striped scale bar, approximately 30 cm long, is positioned horizontally in the lower-middle section of the image. Above the scale bar, a small white triangular marker with a black border is placed. Another similar marker is partially visible in the bottom left corner. The scene is brightly lit, casting soft shadows that emphasize the textures of the pottery and the parched soil.

In situ smashed
vessels in Space 32
(2017)



In situ smashed vessels in Space 32 (2013)

In situ smashed vessels in Space 37 (2013)





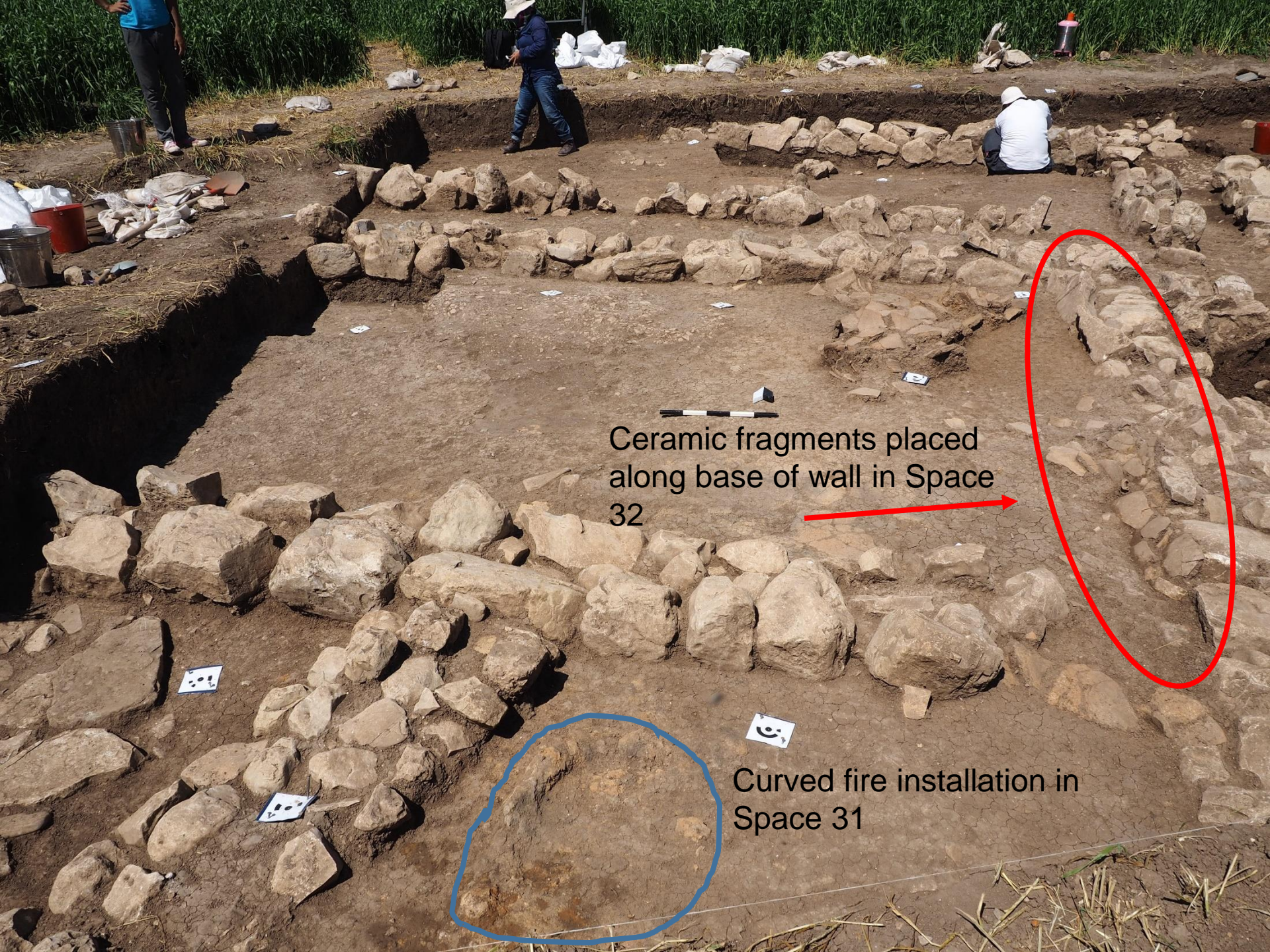
In situ smashed vessels in Space 37 (2017)

Pebbled surface
found under
smashed storage
vessel in Space 32



Pebbled surface
found under
smashed storage
vessel in Space 32





Ceramic fragments placed
along base of wall in Space
32

Curved fire installation in
Space 31

Serving vessels *in situ* in Space 37



Clusters of smashed cooking
pots in Space 65





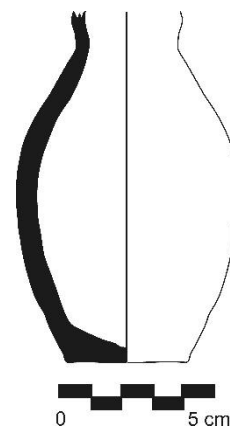
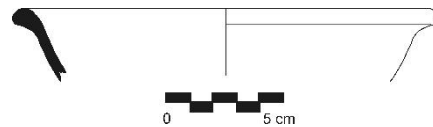
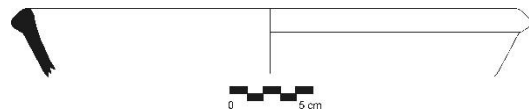
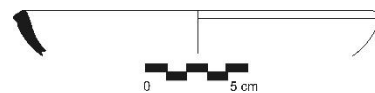
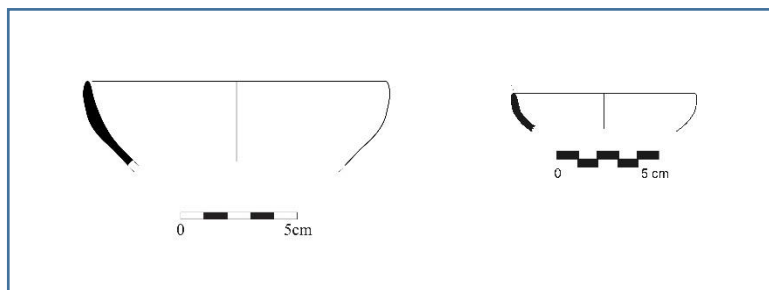
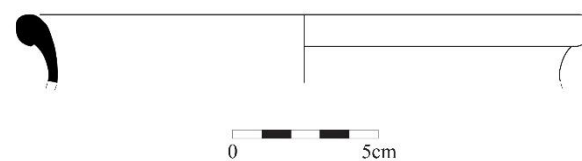
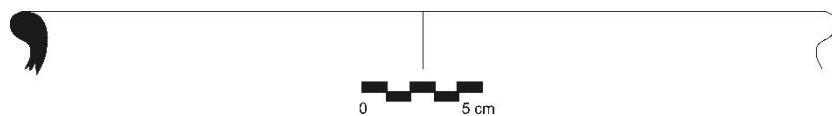
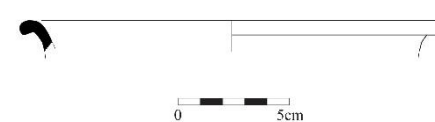
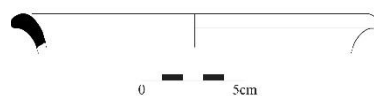
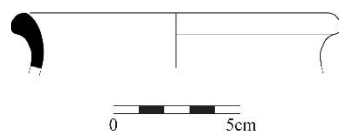
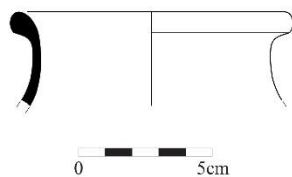
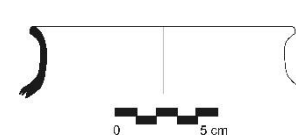
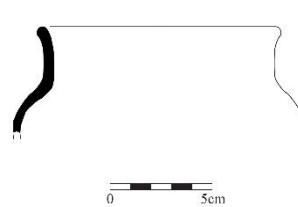
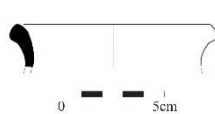
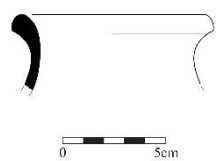
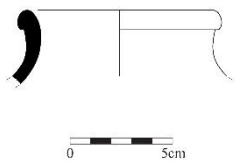
Animal bone in Space 65

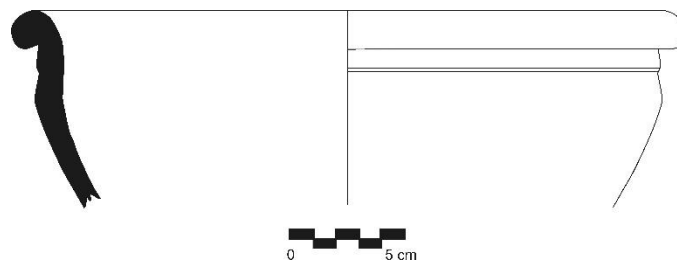
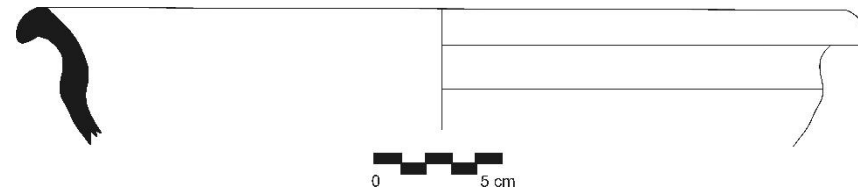
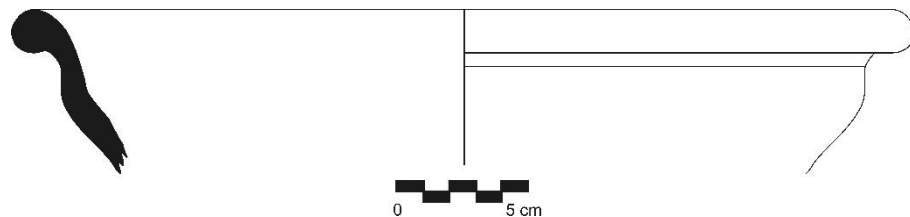
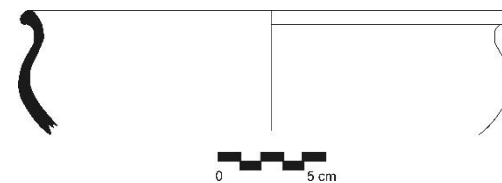
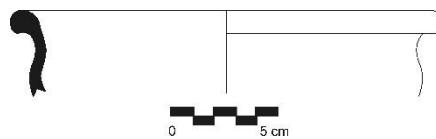
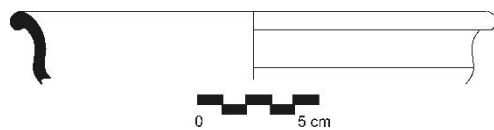
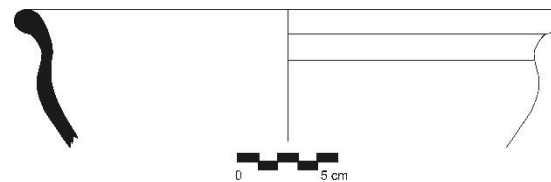
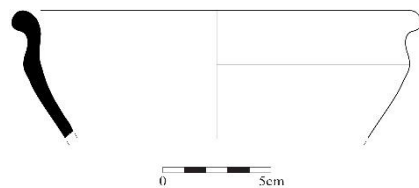
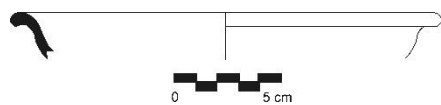


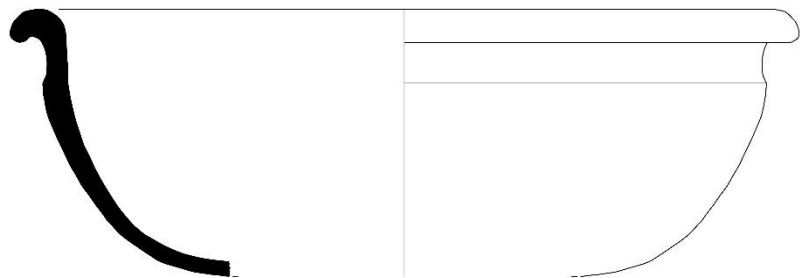
Sasanian period remains on
top of earlier Assyrian
materials

The image shows an archaeological excavation of a site. In the upper left, a shovel with a wooden handle and a red-orange blade is partially visible. A red arrow points to a small, light-colored object on the ground. To the right of the arrow is a piece of white plastic or paper. The ground is dark brown soil. In the center, there are several large, light-colored, irregularly shaped stones or rubble. A black and white striped scale bar is placed horizontally in the center. To the right of the scale bar is a small, dark, triangular object. The bottom of the image shows a large pile of light-colored, irregularly shaped stones or rubble. The right side of the image shows a deep, dark brown soil trench or pit.

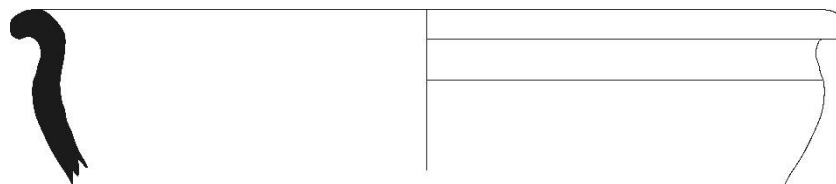
Clusters of smashed cooking
pots in Space 65







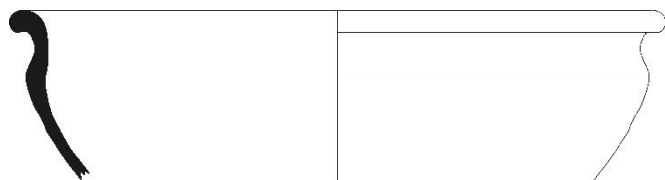
0 5 cm



0 5 cm



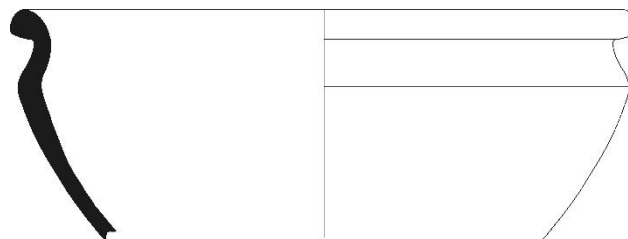
0 5 cm



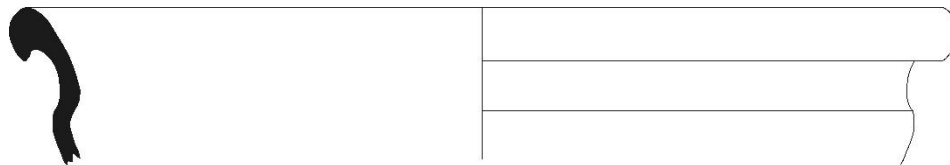
0 5 cm



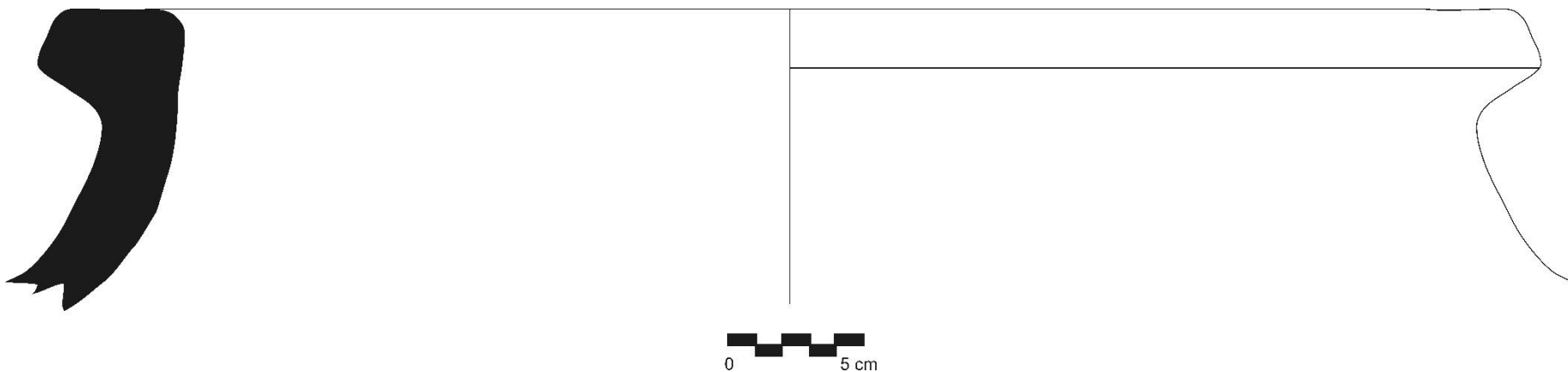
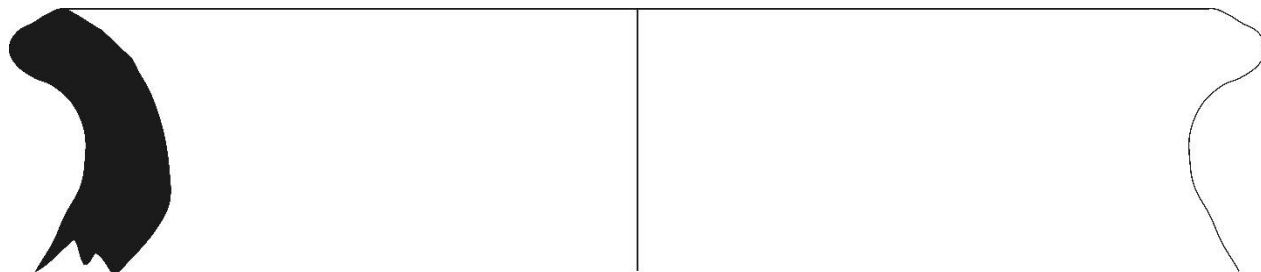
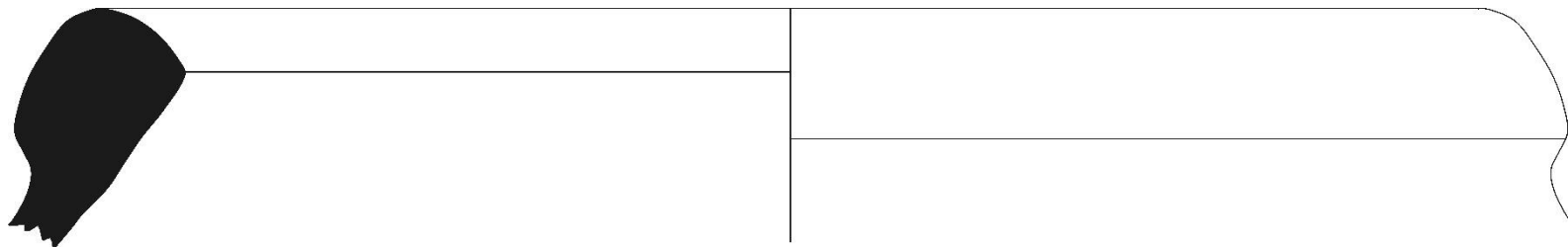
0 5 cm

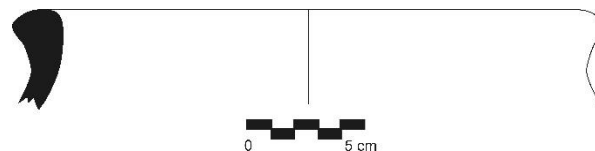
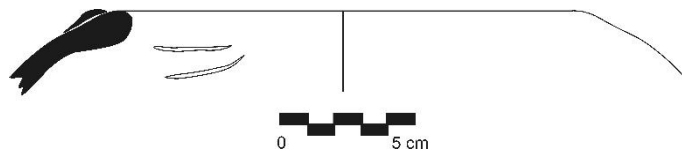
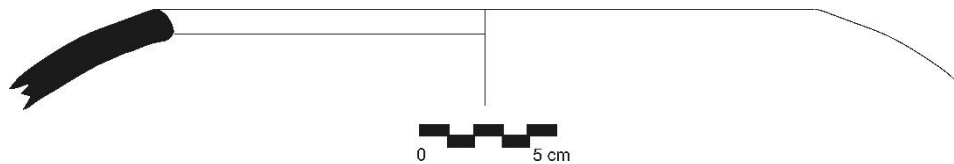
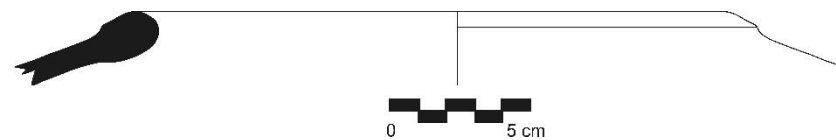
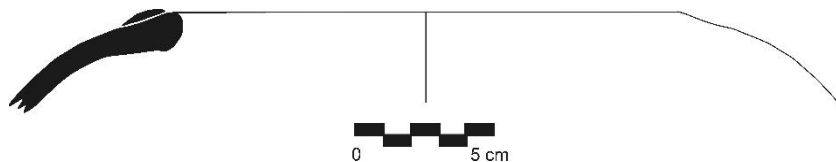
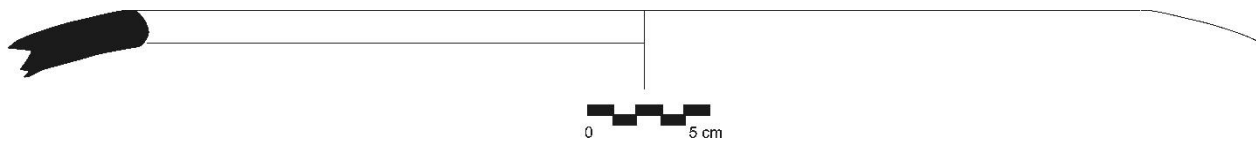
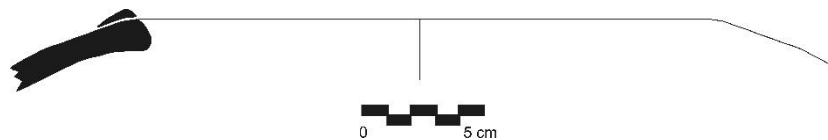
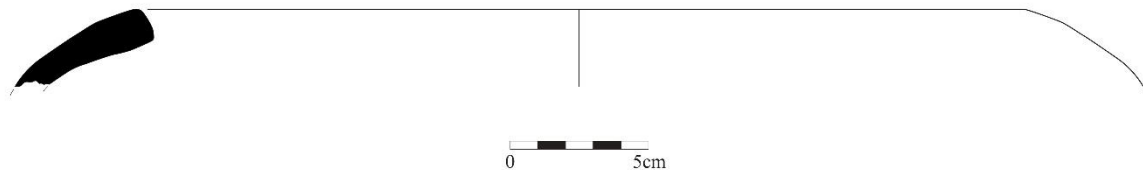


0 5 cm

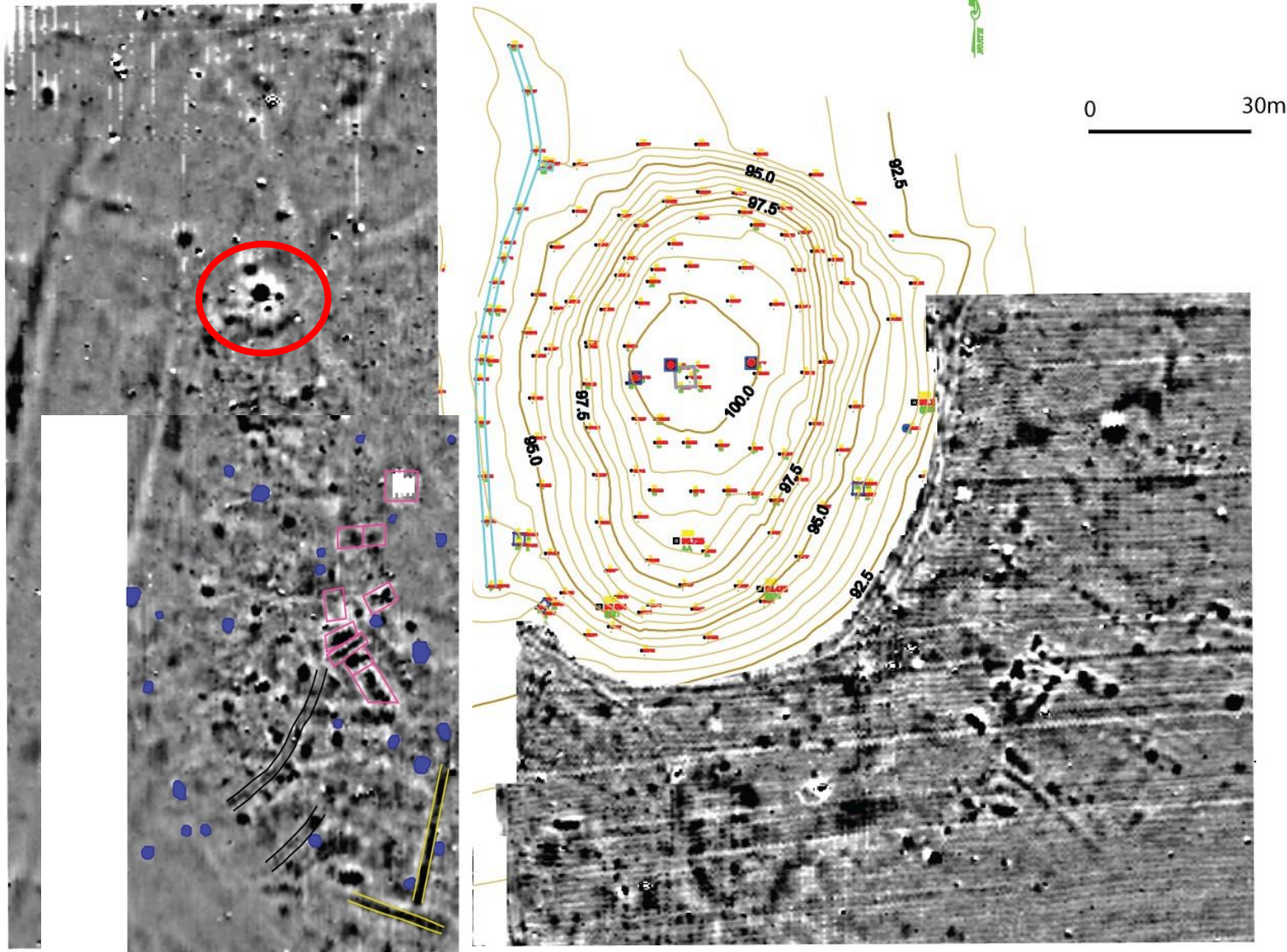


0 5 cm



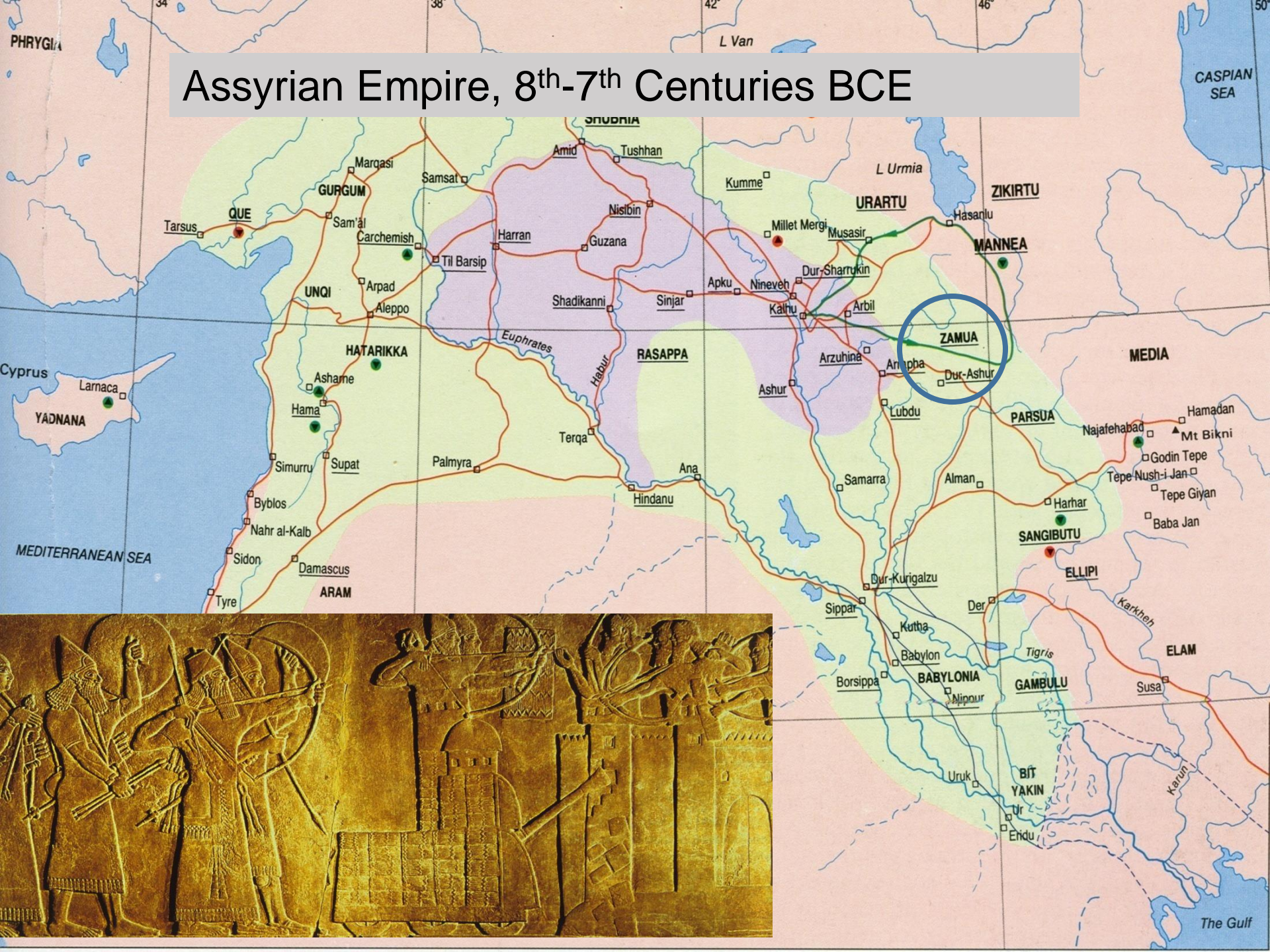


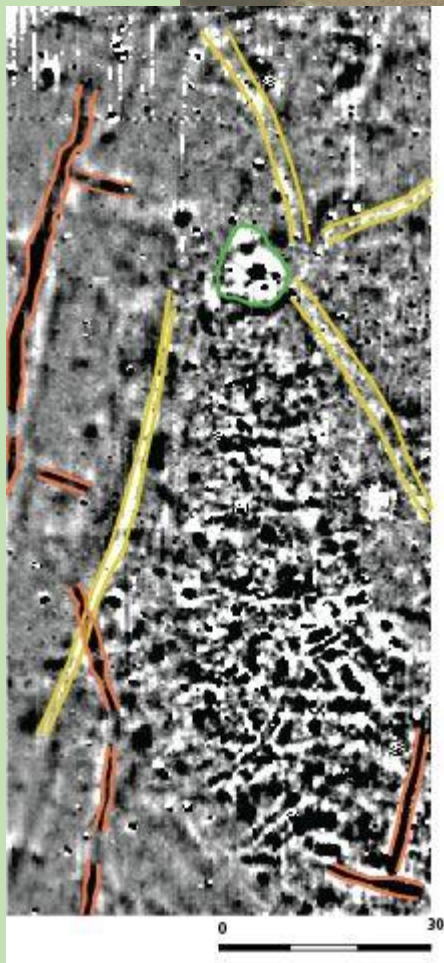
Fluxgate Gradiometry Survey of Betansur, David Thornley and William Owen, August 2017.



- Metallic objects
- Possible Track
- Linear wall or enclosure
- Foundation walls of buildings

Assyrian Empire, 8th-7th Centuries BCE





Thanks to:

- Roger and Wendy Matthews, Reading University
- Kamal Rasheed Raheem, Director of the Sulaymaniyah Directorate of Antiquities and Heritage
- Kamal Rouf Aziz, Sulaymaniyah Directorate of Antiquities and Heritage Representative
- Parween Yawar Manda
- Sheri Pak and Lynn Welton, and SSHRC Canada
- 55 Bestansuri workers (foremen Muhammed Abdul Karim and Brahim Mahmoud)

